

*Introducing Andover Fabrics new collection:  
Winterthur Toile by Kathy Hall*

# Winterthur Toile



Winterthur Toile fabrics by Kathy Hall  
Quilt designed by Gail Kessler  
Pieced by Louise Horkey  
Machine quilted by Barbara Persing  
Finished size: 73½" x 73½"



**makower uk**<sup>®</sup>

1384 Broadway · New York, NY 10018 · (800) 223-5678  
[www.andoverfabrics.com](http://www.andoverfabrics.com)

*- Free Pattern Download Available -*

# Winterthur Toile

Introducing Andover Fabrics new collection: *Winterthur Toile* by **Kathy Hall**

Quilt designed by Gail Kessler, pieced by Louise Horkey, and machine quilted by Barbara Persing

## Welcome

Warm and inviting, this striking quilt will warm up any room. The classic LeMoyne Star Blocks and Sawtooth Border combine with the column print to bring a real sense of tradition to your home.

The LeMoyne Star blocks and Sawtooth Border triangles have many bias edges. To lessen any problems with these edges, we suggest that you press the wrong side of the fabric with spray starch or sizing prior to cutting.

Quilt finishes 73½" x 73½"

Number of blocks and finished sizes  
(1) LeMoyne Star Block 17¾" x 17¾"  
(4) LeMoyne Star Blocks 8" x 8"

## Fabric Requirements and Cutting Directions

### **3953-O 1 yard Gold Print (LeMoyne Stars, Sawtooth Border, piecing)**

- \*Cut (1) 8<sup>5</sup>/<sub>8</sub>" square in half twice diagonally to make 4 quarter-square triangles
- Cut (4) 5<sup>3</sup>/<sub>4</sub>" squares
- Cut (16) 2<sup>7</sup>/<sub>8</sub>" squares
- Cut (4) 4<sup>5</sup>/<sub>8</sub>" squares in half twice diagonally to make 16 quarter-square triangles
- Cut (24) Template C
- Cut (4) 4<sup>1</sup>/<sub>4</sub>" squares

### **1867-R2 1 yard Red Dimple Print (LeMoyne Stars, Sawtooth Border)**

- Cut (4) Template A
- Cut (16) Template B
- Cut (20) Template C
- Cut (8) Template D

### **\*\*3954-K 1 yard Black/Orange Stripe (LeMoyne Stars, border)**

- \*Cut (4) 3<sup>1</sup>/<sub>2</sub>" x 51<sup>1</sup>/<sub>2</sub>" strips, pieced from 6 width of fabric strips
- Cut (4) Template A with stripes running in the same direction on all
- Cut (16) Template B with stripes running in the same direction on all

### **3951-K 3/8 yard Black/Orange Small Floral (inner border)**

- Cut (4) 4<sup>1</sup>/<sub>4</sub>" x 18<sup>1</sup>/<sub>2</sub>" strips

### **3952-K 1/4 yard Black/Orange Mosaic Print (border squares)**

- Cut (4) 5<sup>3</sup>/<sub>4</sub>" squares

### **\*\*3950-K 1 3/4 yards Tan/Black Column Border Stripe (border)**

- Cut (4) 8" x 56" strips lengthwise, each centered on a column

### **3949-K 1 3/4 yards Black/Orange Large Floral (outer border)**

- Cut (4) 8<sup>1</sup>/<sub>2</sub>" x 57<sup>1</sup>/<sub>2</sub>" strips lengthwise

\*Cut first.

\*\*Additional yardage needed for binding or backing (see below).

### **3950-K 4 3/4 yards Tan/Black Column Border Stripe (backing)**

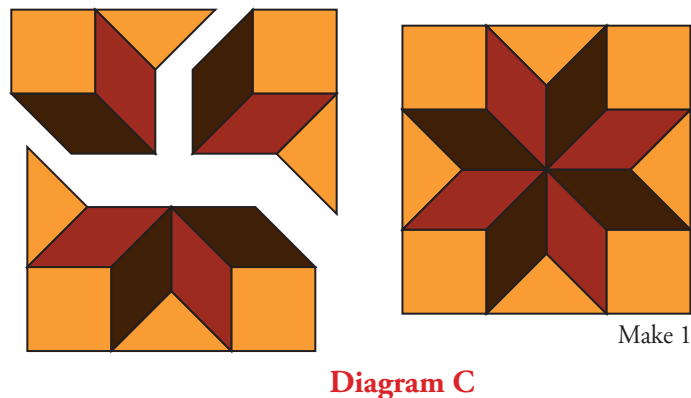
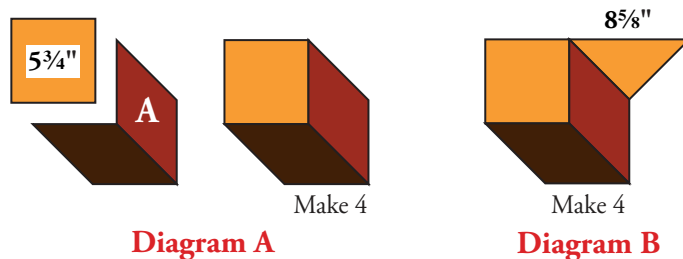
- Cut and piece lengthwise to fit quilt top with 4" overlap on all sides.

### **3954-K 3/4 yard Black/Orange Stripe (binding)**

- Cut (9) 2<sup>1</sup>/<sub>2</sub>" x width of fabric strips

## Making the Blocks and Sawtooth Border

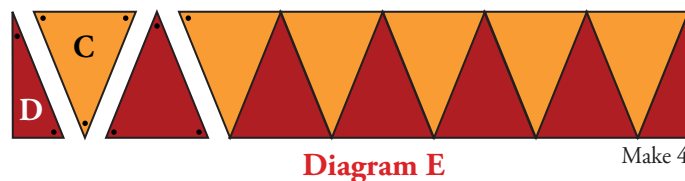
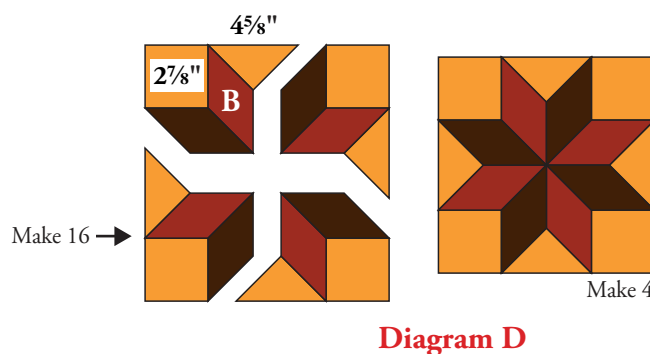
1. Referring to Diagram A, stitch together 1 gold print  $5\frac{3}{4}$ " square and 1 each red dimple and black/orange stripe Template A to make pieced unit. Make 4. Sew 1 gold print  $8\frac{5}{8}$ " quarter-square triangle to each unit (Diagram B). Make 4. Stitch together 4 pieced units to make large LeMoyne Star Block (Diagram C). Make 1.
2. In same manner and referring to Diagram D, make 4 small LeMoyne Star Blocks using gold print  $2\frac{7}{8}$ " squares and  $4\frac{5}{8}$ " quarter-square triangles, red dimple Templates B, and black/orange stripe Templates B. Make 4.
3. Aligning match points, stitch together 6 gold print Templates C and 5 red dimple Templates C (Diagram E). Sew 1 red Template D to each end to make Sawtooth Border strip. Make 4.



## Assembling the Quilt

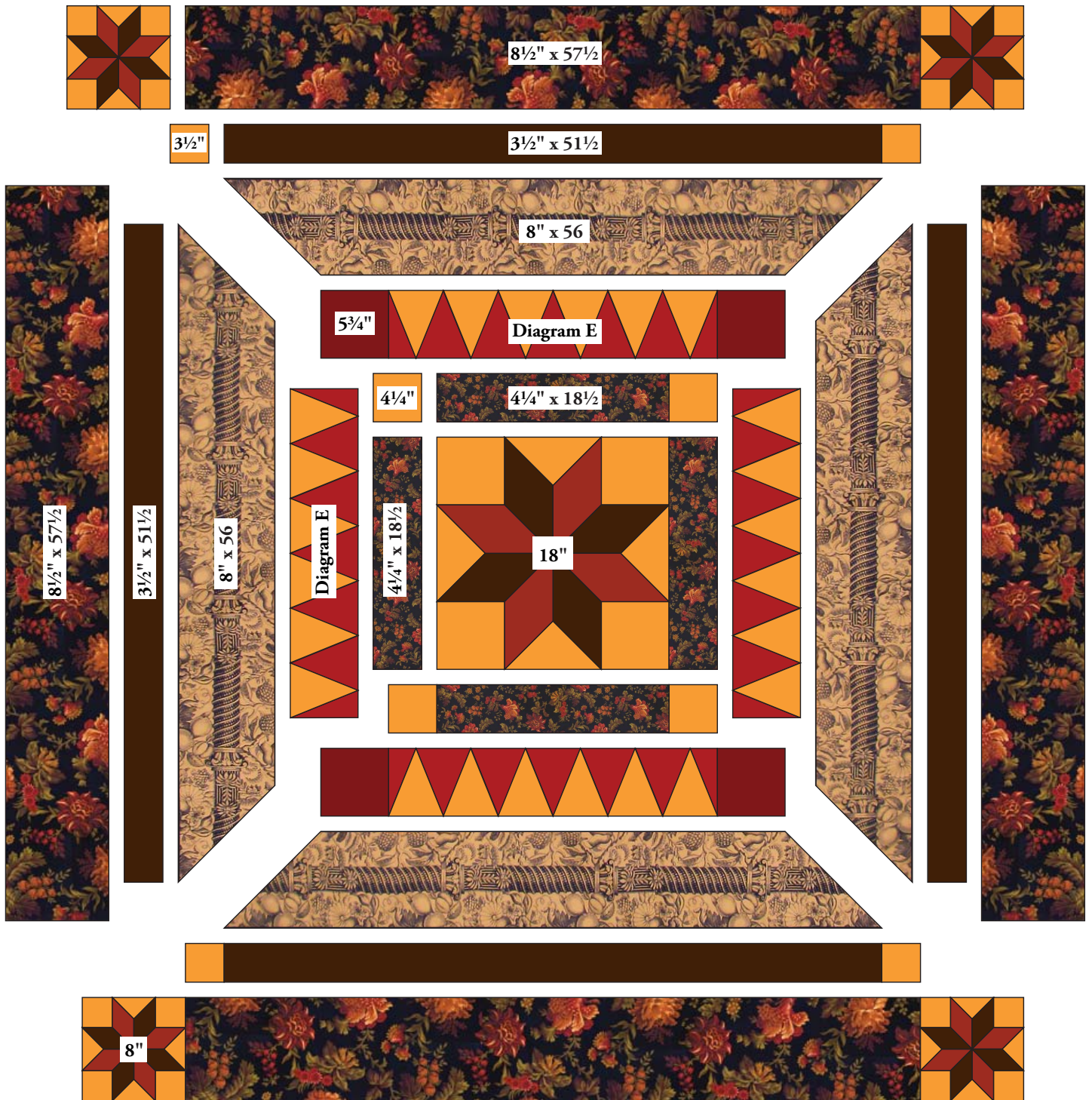
Please refer to Assembly Diagram and quilt photo throughout assembly.

4. Stitch 2 black/orange small floral  $18\frac{1}{2}$ " strips to sides of large LeMoyne Star Block. Sew gold print  $4\frac{1}{4}$ " squares to ends of remaining black/orange small floral strips and stitch to top and bottom.
5. Watching orientation, stitch 2 Sawtooth Border strips to sides. Sew black/orange mosaic print  $5\frac{3}{4}$ " squares to ends of remaining mosaic print strips and stitch to top and bottom.
6. Beginning and ending  $\frac{1}{4}$ " from quilt center corners, stitch Tan/Black Column Border Stripe strips to all sides of quilt center. Miter corners and then trim excess fabric, leaving at least  $\frac{1}{4}$ " seam allowance.
7. Sew 2 black/orange stripe  $51\frac{1}{2}$ " strips to sides. Stitch gold print  $3\frac{1}{2}$ " squares to ends of remaining black/orange stripe strips and sew to top and bottom.
8. Stitch 2 black/orange large floral  $57\frac{1}{2}$ " strips to sides. Sew small LeMoyne Star Blocks to ends of remaining  $57\frac{1}{2}$ " strips and stitch to top and bottom to complete quilt top.



## Finishing the Quilt

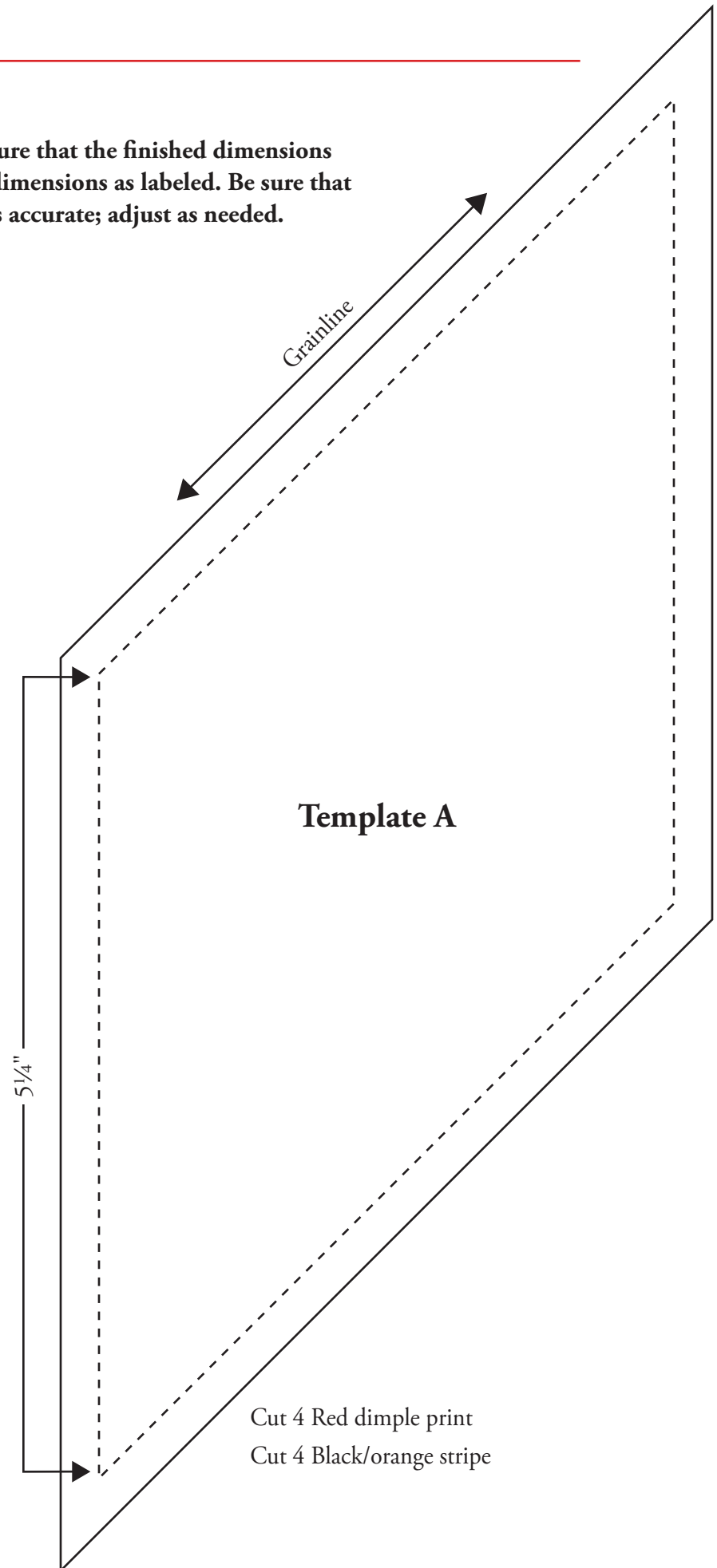
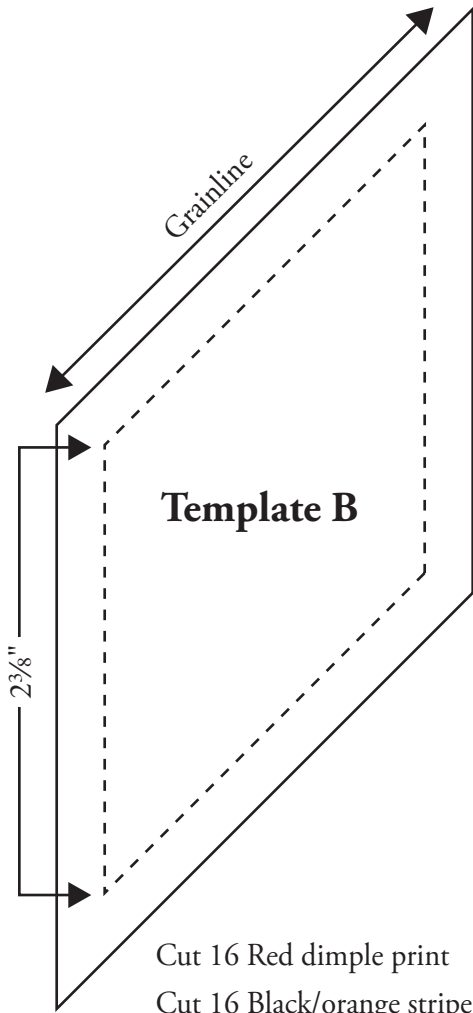
9. Layer quilt with batting and Tan/Black Column Border Stripe backing. Quilt as desired. Bind with black/orange stripe to finish quilt.



Quilt Diagram

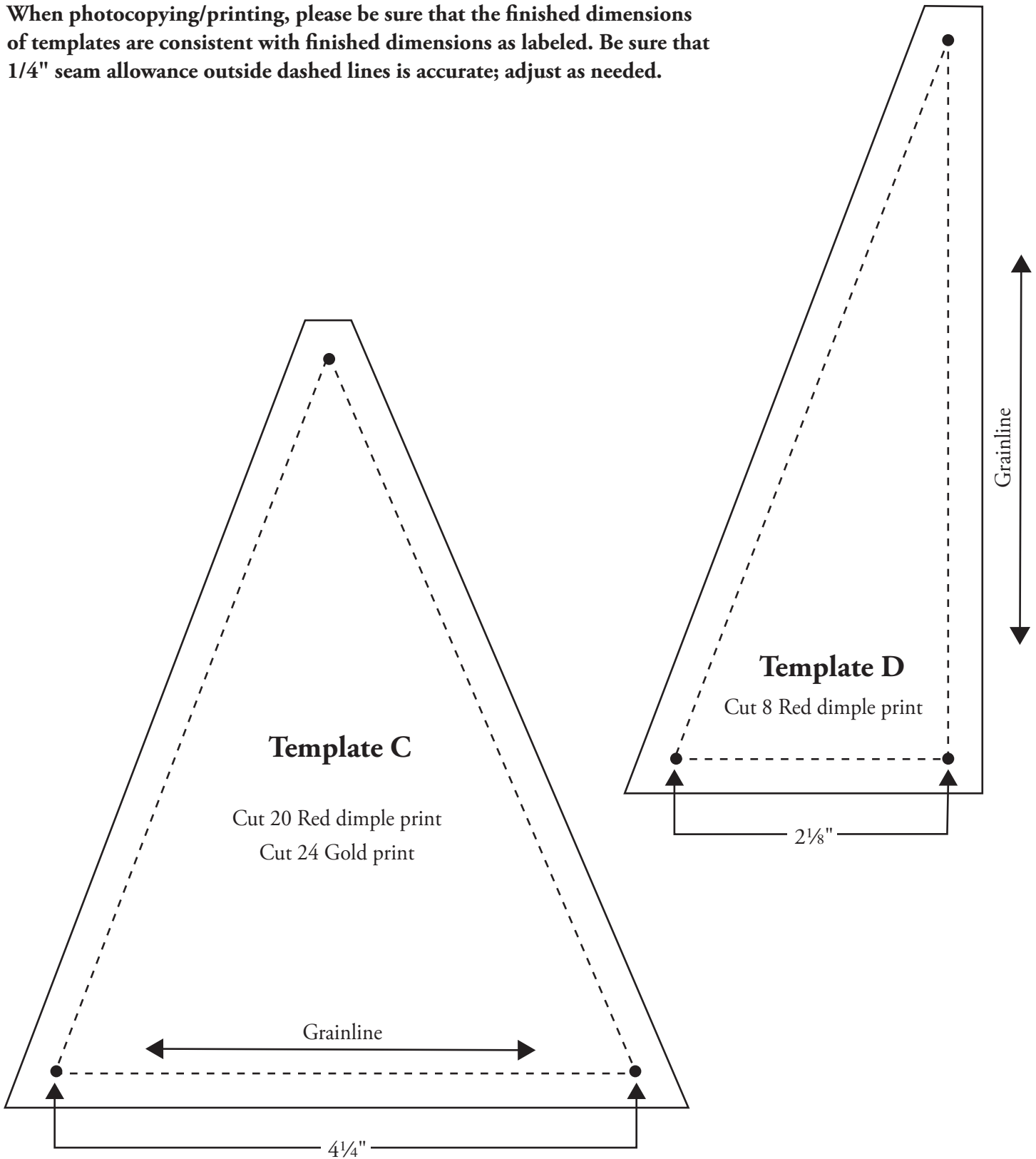
## LeMoyne Star Template

When photocopying/printing, please be sure that the finished dimensions of templates are consistent with finished dimensions as labeled. Be sure that 1/4" seam allowance outside dashed lines is accurate; adjust as needed.



## Triangle Templates

When photocopying/printing, please be sure that the finished dimensions of templates are consistent with finished dimensions as labeled. Be sure that 1/4" seam allowance outside dashed lines is accurate; adjust as needed.



1384 Broadway  
 New York, NY 10018  
 (800) 223-5678  
 www.andoverfabrics.com

# Winterthur Toile

by Kathy Hall



3949-K\*



3950-K\*



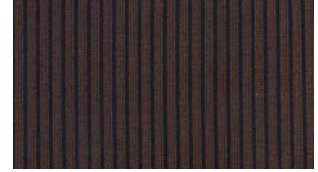
3951-K\*



3952-K\*



3953-K\*



3954-K\*



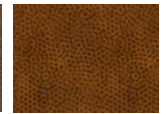
1867-R2\*



1867-010



1867-N13



1867-DN



3949-R



3950-N



3951-R



3952-R



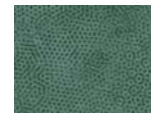
3953-N



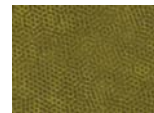
3954-R



1867-N



1867-G26



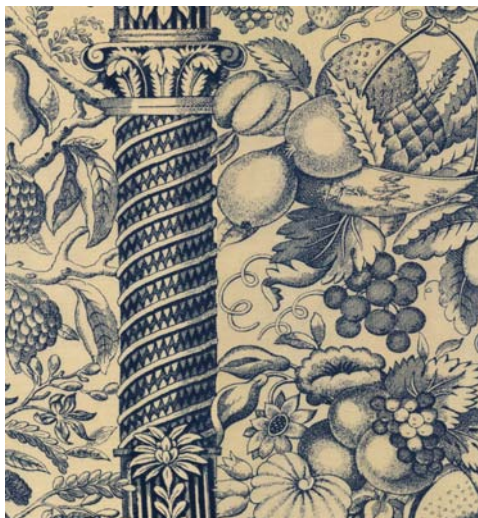
1867-V3



1867-R3



3949-B



3950-B



3951-B



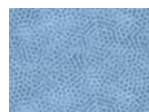
3952-B



3953-R



3954-B



1867-T6



1867-Y1



1867-R6



1867-V4

\*Indicates fabric used in quilt pattern. Fabrics shown are 25% of actual size.