

Quail

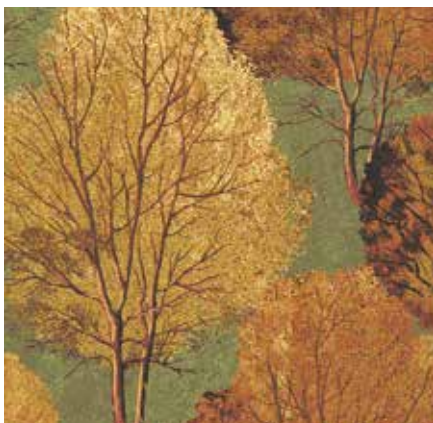
BY SUITE 1500



Hunting Day Quilt
designed by: **Janet Houts**

Quilt Size: 56" x 64"

andoverfabrics.com



andover

•
•
• **makower uk**
• *The Henley Studio*

Free Pattern Download Available

1384 Broadway New York, NY 10018
Tel. (800) 223-5678 • andoverfabrics.com

Hunting Day Quilt



Introducing Andover Fabrics new collection: **QUAIL** by Suite 1500

Quilt designed by Janet Houts

Quilt finishes 56" x 64"

20 Blocks: 4" x 4"

You can almost feel the cool autumn air and hear the sound of the birds' wings when you gaze at the imagery on this wall-size quilt. Golden fields and trees are all part of the scene. The novelty print panel in the quilt's center is framed with simple borders and easy patchwork to make this quick quilt perfect for the outdoorsman in your life.

Fabric Requirements

		Yardage	Fabric
Fabric A	setting	1 panel (2/3 yard)	8360-G
Fabric B	outer border	3/4 yd	8361-N
Fabric C	middle border	1 1/4 yds	8362-O
*Fabric D	blocks	1/2 yd	8363-B
Fabric E	outer border	3/4 yd	8364-G
Fabric F	sash, binding	1 yd	8364-Y
Fabric G	blocks	1/2 yd	1867-YL
Backing		3 3/4 yards	8363-B

Cutting Directions

Note: Read assembly directions before cutting patches. All measurements are cut sizes and include 1/4" seam allowances. Borders are cut the exact lengths required plus 1/4" seam allowances. WOF designates the width of fabric from selvedge to selvedge (approximately 42" wide).

Fabric A Fussy-cut (2) rectangles 22 1/2" x 8 1/2" (read Step 1 first)
Fussy-cut (1) quail panel 22 1/2" x 24 1/2"

Fabric B Cut (12) rectangles 4 1/2" x 6 1/2" (read Step 1 first)
Cut (14) rectangles 6 1/2" x 4 1/2"

Fabric C Cut (2) borders 5 1/2" x 42 1/2", cut lengthwise (cut first)
Cut (2) border 5 1/2" x 44 1/2", cut crosswise from leftovers and pieced

Fabric D Cut (20) squares 4 1/2"

Fabric E Cut (10) rectangles 4 1/2" x 6 1/2" (read Step 1 first)
Cut (12) rectangles 6 1/2" x 4 1/2"
Cut (4) squares 6 1/2"

Fabric F Cut (7) strips 2 1/2" x WOF for binding
Cut (2) sashes 1 1/2" x 34 1/2", cut crosswise
Cut (4) sashes 1 1/2" x 24 1/2", cut crosswise
Cut (8) sashes 1 1/2" x 8 1/2", cut crosswise

Fabric G Cut (80) squares 2 1/2"

Backing Cut (2) panels 36" x 64", pieced to fit quilt top with overlap on all sides

Making the Quilt

1. The novelty Fabric A panel is cut into 3 sections. From the top of the panel, cut the barn/sky 8 1/2" x 22 1/2" rectangle, and then cut the field/bush 8 1/2" x 22 1/2" rectangle. Trim the quail section to 22 1/2" x 24 1/2" if needed. Note the orientation of the houses and grass in the Fabric B and Fabric E patches in the outer border. Cut rectangles used in the top and bottom borders so the print remains upright (the 6 1/2" is lengthwise). Likewise, cut the side border patches so the print remains upright in the quilt (the 6 1/2" is crosswise).
2. The blocks are made with quick stitch-and-flip piecing methods. Draw a diagonal line on the wrong side of each Fabric G 2 1/2" square. Referring to Diagram 1, place a marked square on a Fabric D 4 1/2" square, right sides together, aligning raw edges at the corner. Stitch on the drawn line; trim away and discard excess fabric. Press open. Repeat on the opposite corner, watching orientation of the sewing. Repeat on the remaining corners (Diagram 2). Make 20 blocks.

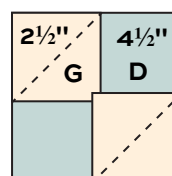


Diagram 1

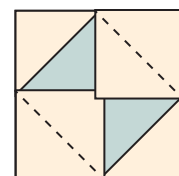
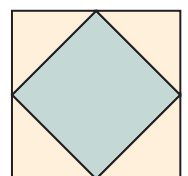


Diagram 2



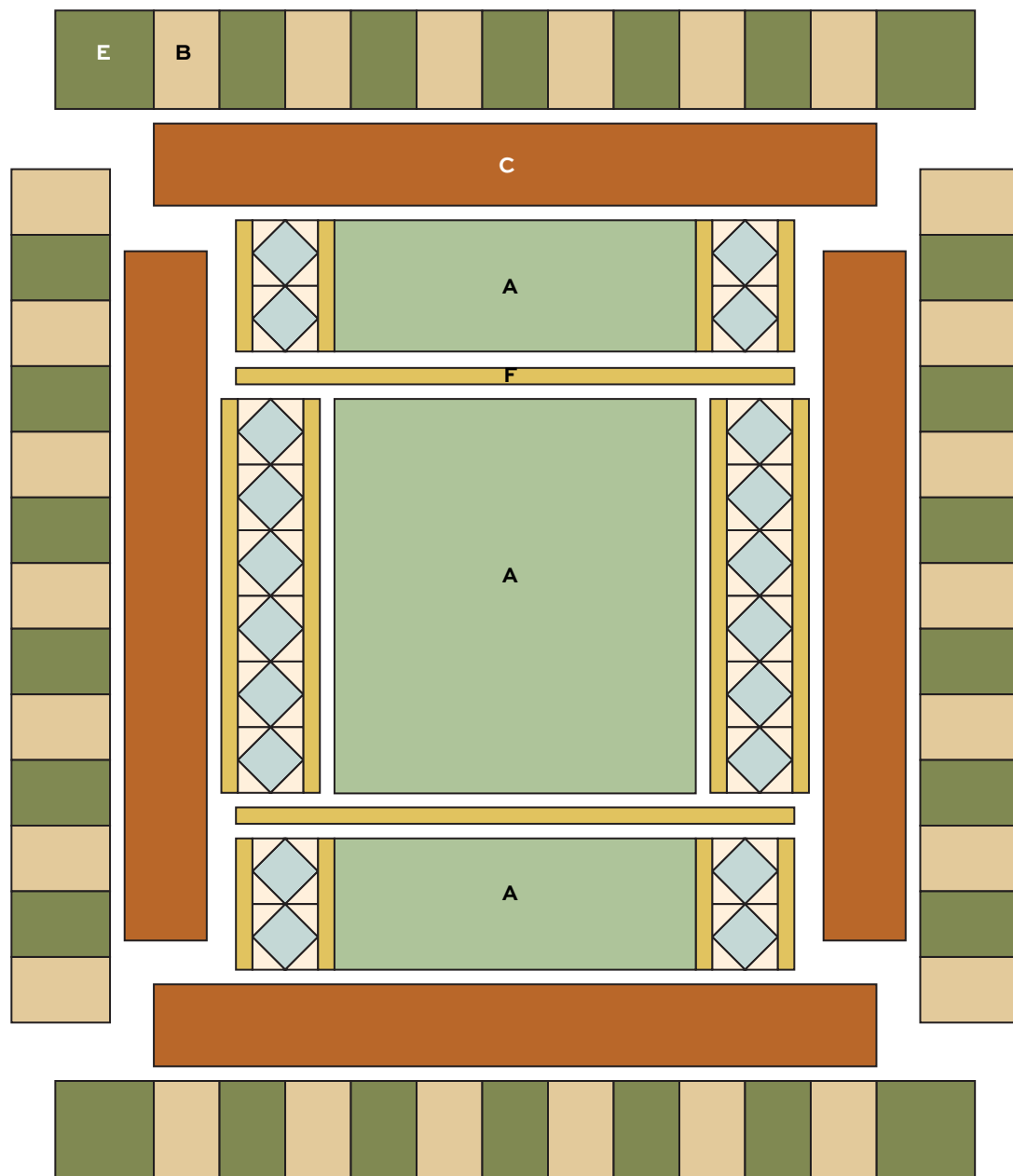
Block
Make 20

Hunting Day Quilt

3. Refer to the Quilt Diagram for the remaining steps. Join 6 blocks end to end to make a side pieced border. Make 2. Sew 24½" Fabric F sashes to long sides of each border. Sew to the sides of the quilt. Sew the quail panel between the pieced borders. Sew the 34½" sashes to the top and bottom.
4. Join 2 blocks end to end. Sew 8½" sashes to the sides. Make 4 block units like this. Sew a block unit to each end of the 8½" barn/sky panel, and sew to the top of the quilt. Sew block units to each end of the field/bush panel and sew to the bottom.
5. Sew shorter Fabric C borders to the sides. Sew the longer borders to the top and bottom.
6. Join 7 Fabric B rectangles alternately with 6 Fabric E rectangles, noting orientation of the prints. Repeat to make a second border like this. Sew to the sides of the quilt.
7. Join 6 Fabric B rectangles alternately with 5 Fabric E rectangles, noting orientation of the prints. Sew a Fabric E square to each end. Sew to the top of the quilt. Repeat for the bottom.

Finishing the Quilt

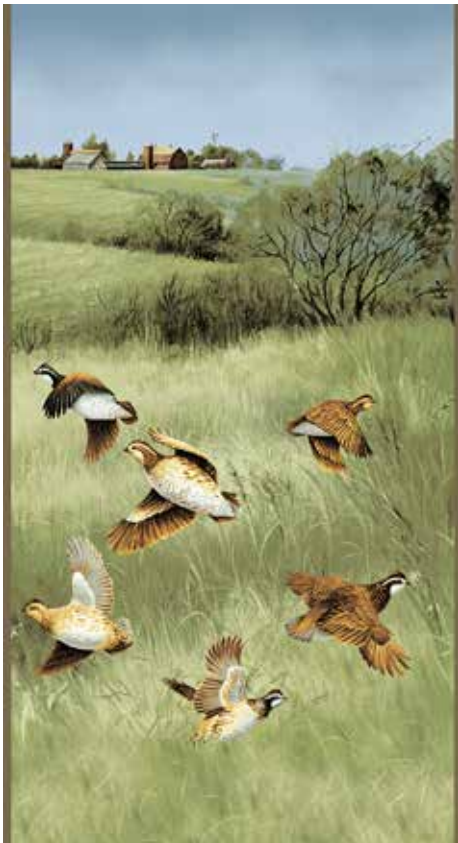
8. Layer the quilt with batting and backing and baste. Quilt in the ditch around borders and block patches. Quilt around the printed motifs in the center panels. Bind to finish the quilt.



Quilt Diagram

Quail

BY SUITE 1500



8360-G*



8360-N



8361-G



8361-N*



8362-G



8362-N



8362-O*



8363-B*



8363-K



8363-R



8364-G*



8364-N



8364-Y*



1867-YL*

All fabrics are used in quilt pattern.
Fabrics shown are 10% of actual size.

Free Pattern Download Available

1384 Broadway New York, NY 10018

Tel. (800) 223-5678 • andoverfabrics.com

andover

•
•
•
•
makower uk
The Henley Studio