

NYC



Quilt designed by Gail Kessler
Quilt size: 42" x 48"



makower uk

1384 Broadway
New York, NY 10018
(800) 223-5678
www.andoverfabrics.com

NYC fabrics by
makower uk
The Henley Studio

NYC Quilt

Introducing Andover Fabrics new collection: NYC by The Henley Studio for Makower UK
Quilt designed by Gail Kessler

Fabric Requirements

		Yardage	
Fabric A	background	¼ yard	1068-1
Fabric B	outer border	2 yards	1069-1
Fabric C	background	¼ yard	1070-1
Fabric D	background	⅛ yard	1071-1
Fabric E	background	⅛ yard	1072-1
Fabric F	background	¼ yard	1073-1
Fabric G	background	⅛ yard	1074-1
Fabric H	background	⅛ yard	1075-1
Fabric I	border, appliqué	¾ yard	1076-R
*Fabric J	blocks, appliqué	1 yard	1076-B
Fabric K	blocks, backgrd.	1 yard	1867-L
Fabric L	background	¼ yard	2508-Y
Backing		2¾ yards	1068-1

*includes binding

Quilt finishes 42" x 48"
4 Pieced Blocks: 8" x 8"

If you're in a New York state of mind, you'll enjoy working with these novelty fabrics with images of one of the world's most incredible cities. The urban-inspired prints include famous landmarks, high-rise buildings at night, coffee cups with city logos, and street-side motifs, including the ever-present yellow cabs. The multiple prints form a background for the stylized Lady Liberty that shines in all her glory.

Cutting Directions

Note: All measurements are cut sizes and include ¼" seam allowances. Borders are cut the exact lengths required plus ¼" seam allowances. WOF designates the width of fabric from selvedge to selvedge (approximately 42" wide).

Fabric A	Cut (26) squares 2½" x 2½"
Fabric B	Fussy-cut (2) borders 8½" x 32½", cut lengthwise Fussy-cut (2) borders 8½" x 26½", cut lengthwise
Fabric C	Cut (26) squares 2½" x 2½"
Fabric D	Cut (13) squares 2-½" x 2½"
Fabric E	Cut (11) squares 2½" x 2½"
Fabric F	Cut (26) squares 2½" x 2½"
Fabric G	Cut (13) squares 2½" x 2½"
Fabric H	Cut (13) squares 2½" x 2½"
Fabric I	Cut (2) borders 1½" x 30½", cut crosswise Cut (2) borders 1½" x 26½", cut crosswise Cut (20) paper-foundation-pieced (PFP) patches Cut patches 4-30 for Lady Liberty appliqué
Fabric J	Cut (5) strips 2½" x WOF for binding Cut (4) squares 7" x 7" Cut patches 1-3 for Lady Liberty appliqué

Fabric K	Cut (4) squares 8½" x 8½" Cut (26) squares 2½" x 2½" Cut (24) paper-foundation-pieced (PFP) patches
Fabric L	Cut (26) squares 2½" x 2½"
Backing	Cut (2) panels 22" x 48", pieced to fit quilt top with overlap on all sides

Making and Assembling the Quilt

- Referring to the Quilt Center diagram, arrange the light 2½" squares in 13 rows of 10 squares each, following the diagram for placement, or as you wish. Join the patches into rows, and join the rows.
- Trace the Lady Liberty motifs onto the paper side of paper-backed fusible web. Note that the motifs are given in reverse for fusible appliqué. Match the symbols to make the Lady Liberty head and chest pattern. Following manufacturer's instructions, fuse traced patterns to the wrong side of the red or blue fabric. Cut out parts on the drawn lines. Referring to the Lady Liberty Diagram, arrange the blue motifs on the quilt. The bottom of the patches should be even with the bottom raw edge of the quilt. Fuse the blue patches to the quilt, following manufacturer's instructions.

Arrange the red motifs on the blue patches following the diagram. Once you are satisfied with the placement, fuse the red motifs in place.

Finish the edges with a decorative machine stitch using contrasting thread, or use an invisible thread with a blind appliqué machine stitch.

- Join 13 dark 2½" squares in a vertical row and sew to the side of the quilt center. Repeat for the opposite side. Join 12 dark squares in a horizontal row and sew to the top. Repeat for the bottom, catching the edges of the appliqué in the seam.
- Sew long Fabric I borders to the sides. Sew short Fabric I borders to the top and bottom.
- Referring to Diagram 1, mark a diagonal line on the wrong side of each Fabric J 7" square. Place a marked square on a Fabric K 8½" square, right sides together, aligning raw edges at the corner. Stitch on the drawn line; trim away and discard excess fabric. Press open (Diagram 2). Repeat this with the remaining squares, turning Fabric J squares as shown in Diagram 3 so that all Liberty motifs will be upright when stitched to the outer border.
- Trace or photocopy the paper-foundation arc pattern 4 times. Cut the pattern along the outer solid lines. Using paper-foundation piecing methods, stitch Fabric I and Fabric K patches to the foundations. Trim the fabrics ¼" beyond the curved edges of the paper pattern. Press the allowance over the paper pattern. Remove the paper. Make 4 pieced arcs.
- Align the straight sides of a pieced arc with the edges of the pieced block from Step 4 as shown in the Block Diagram, covering the seam between Fabric J and Fabric K. The outer curved edge of the arc should be no closer than ¼" to the corners of the square. Hand stitch the folded curved edges to the background block. Make 4 blocks.
- Fussy-cut the outer borders lengthwise from Fabric B, cutting each border from the same part of the stripes, referring to the quilt photograph for placement. Cut 4 borders the sizes listed in the Cutting Directions. Sew the long borders to the sides of the quilt. Sew a block to the ends of the short borders, rotating as needed to make the design shown. Sew the pieced borders to the top and bottom.

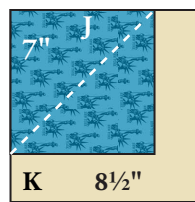


Diagram 1

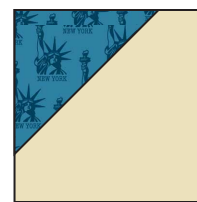


Diagram 2

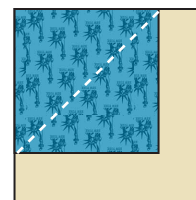
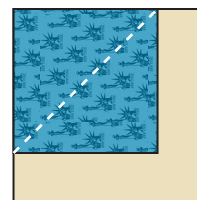
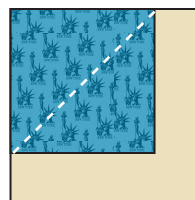
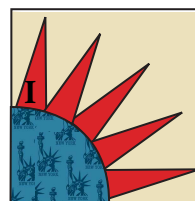
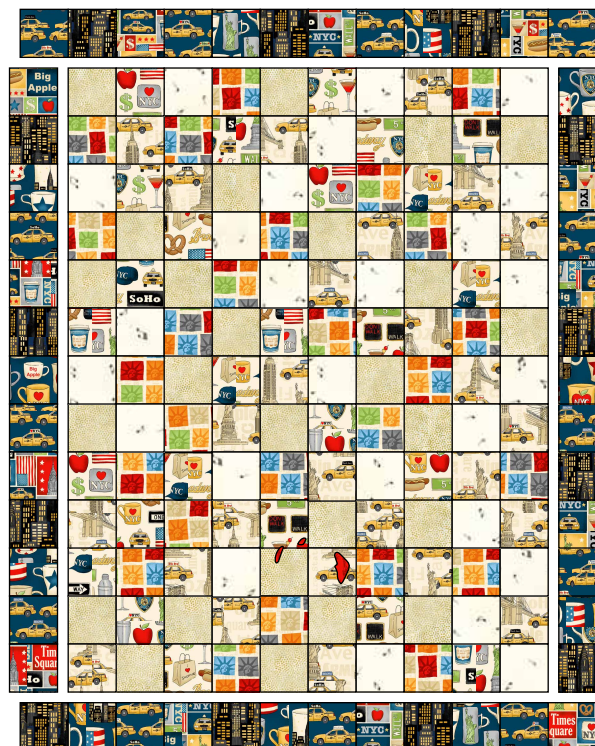


Diagram 3



Make 4

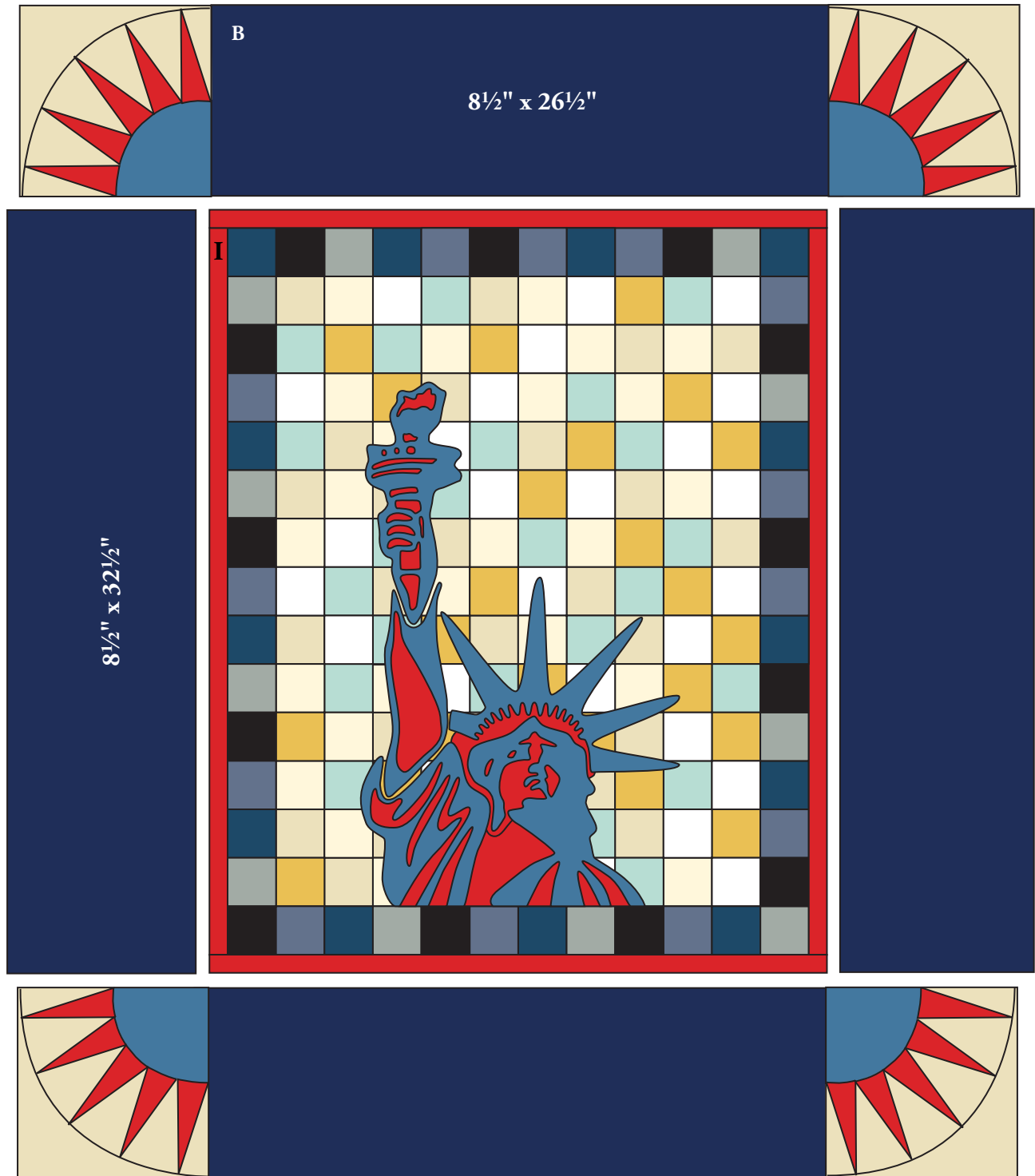
Block Diagram



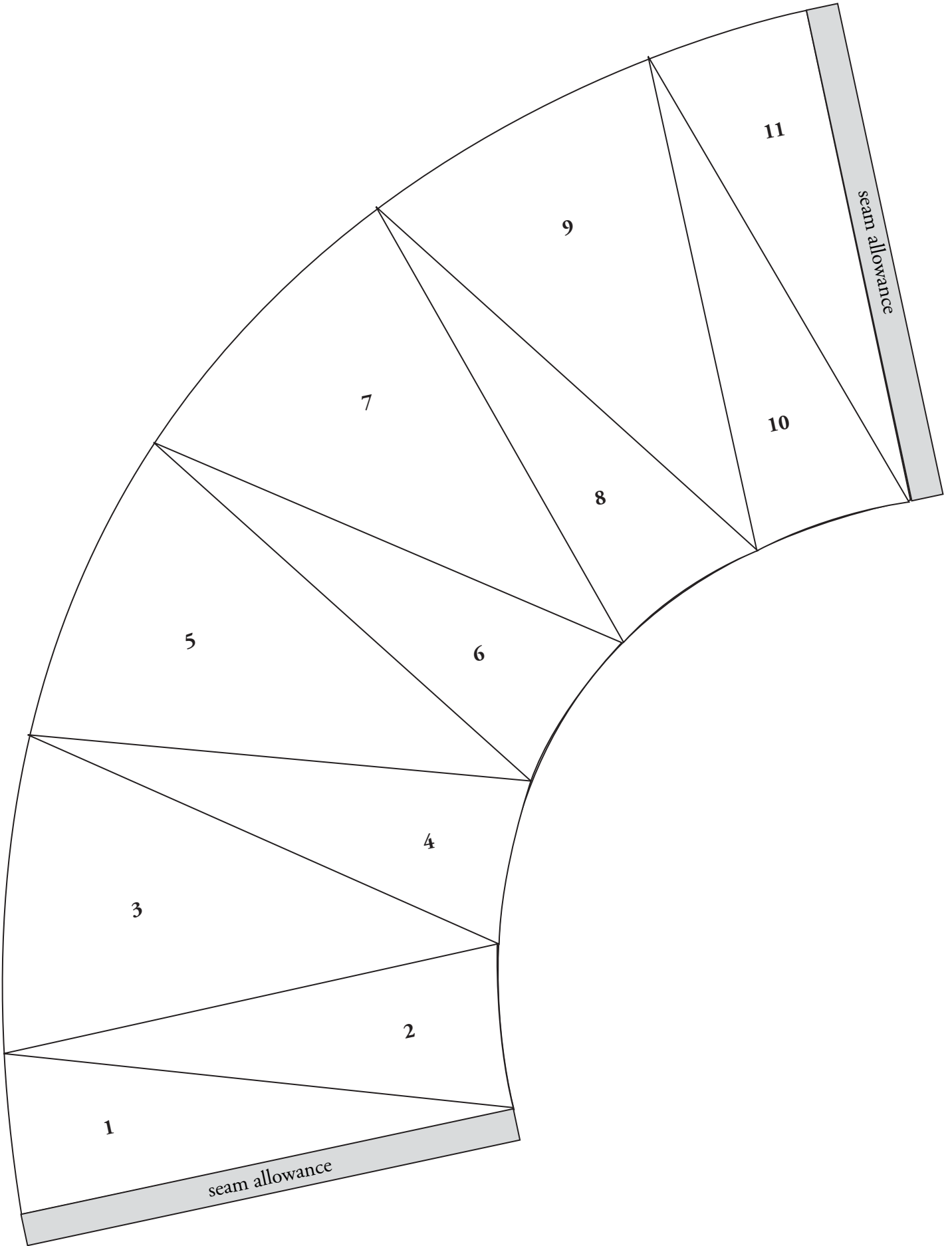
Quilt Center Diagram

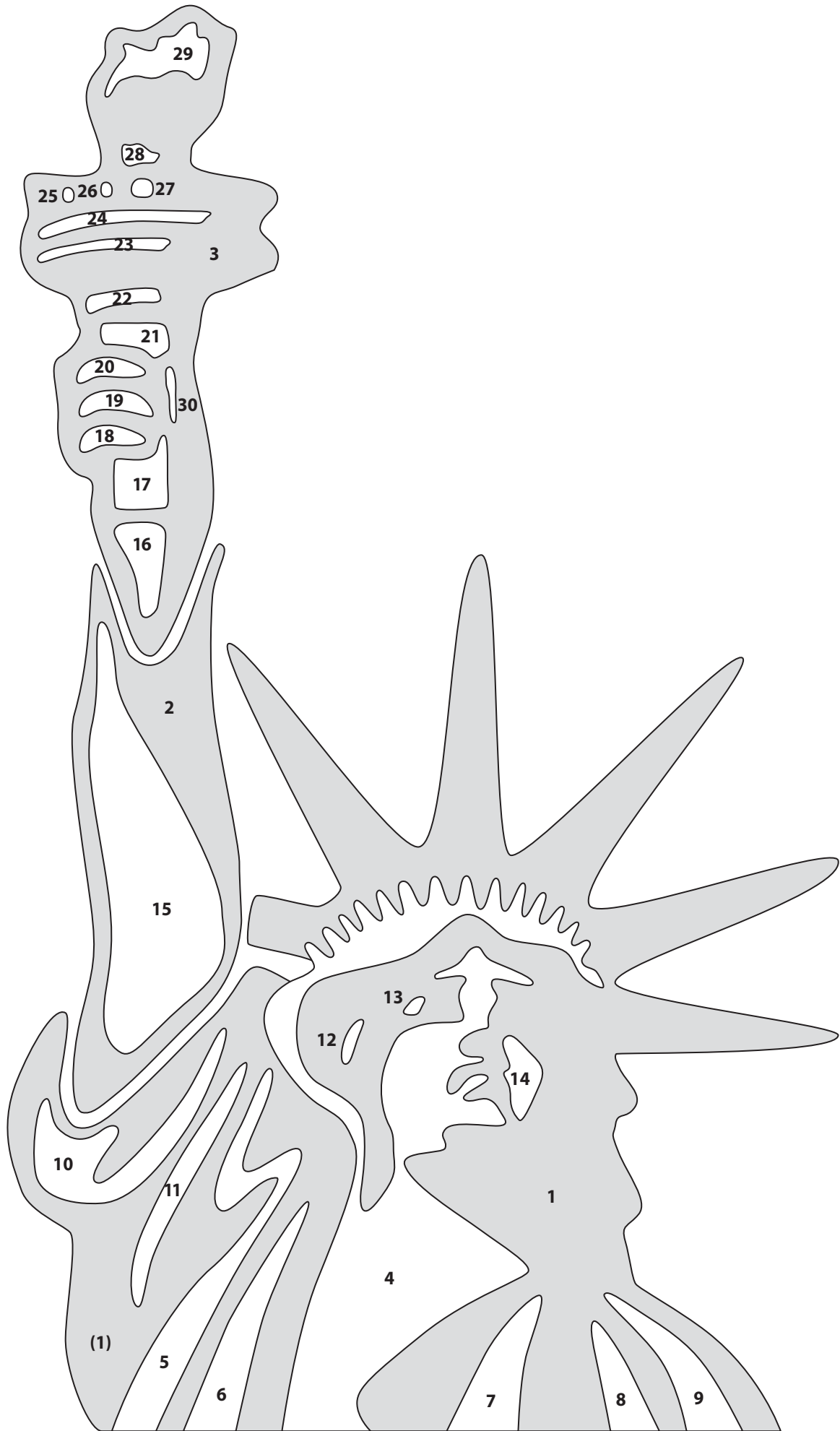
Finishing the Quilt

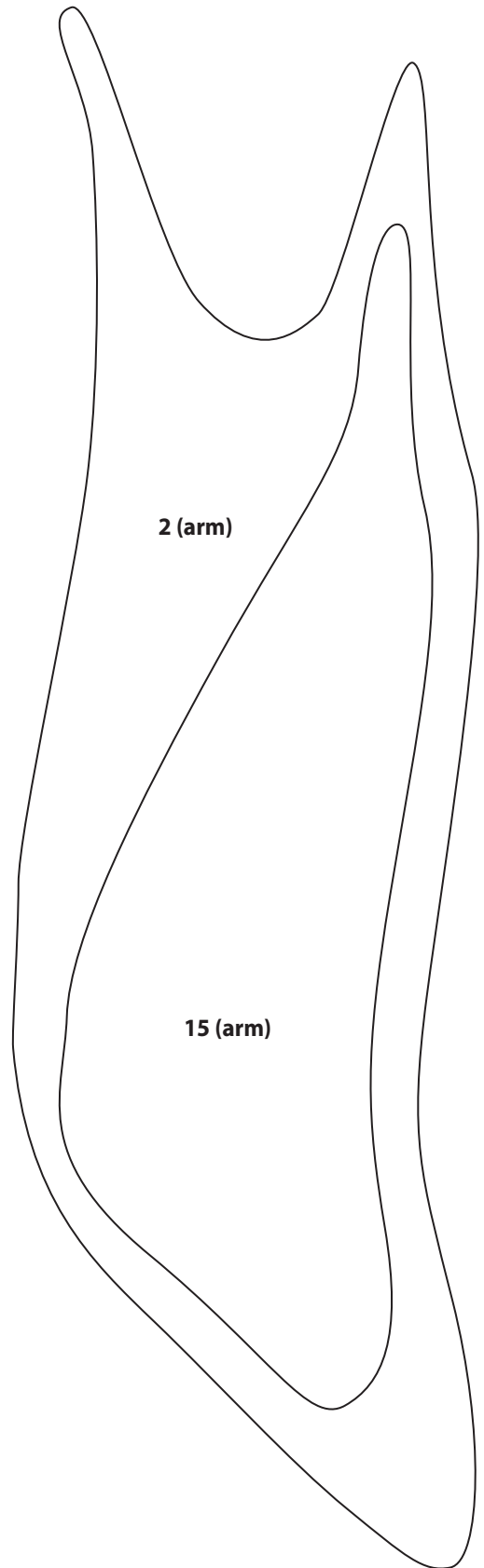
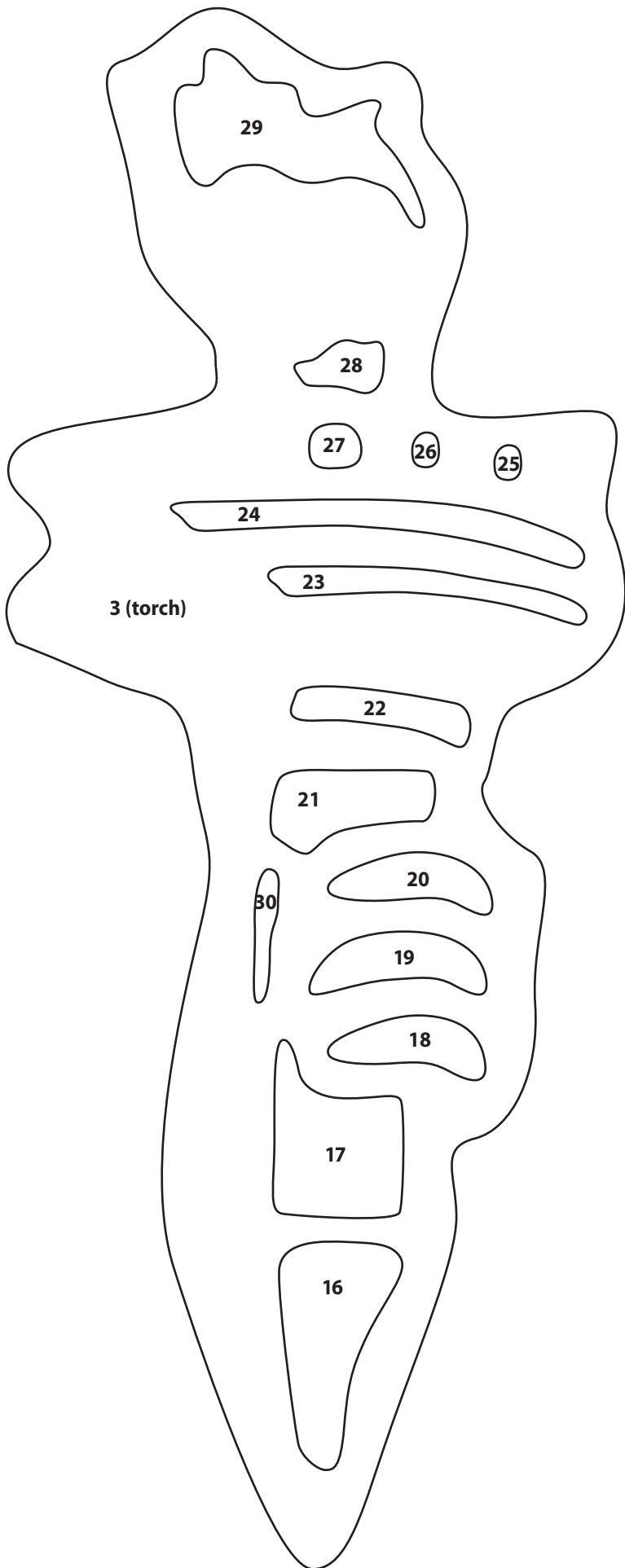
9. Layer the quilt with batting and backing and baste. Quilt in the ditch around borders and block patches. Quilt around the Lady Liberty appliqué and the printed motifs in the outer border. Bind to finish the quilt.

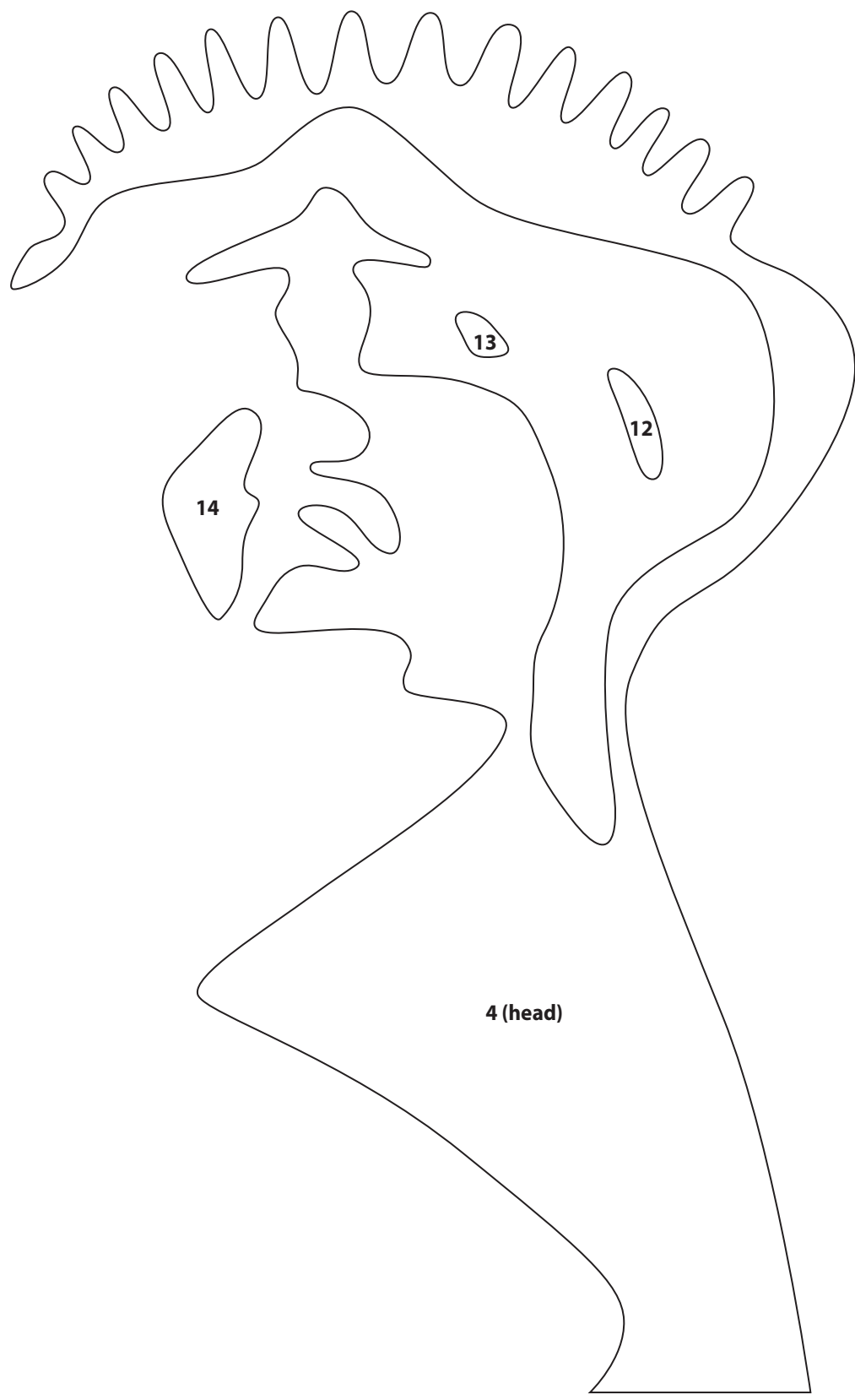


Quilt Diagram

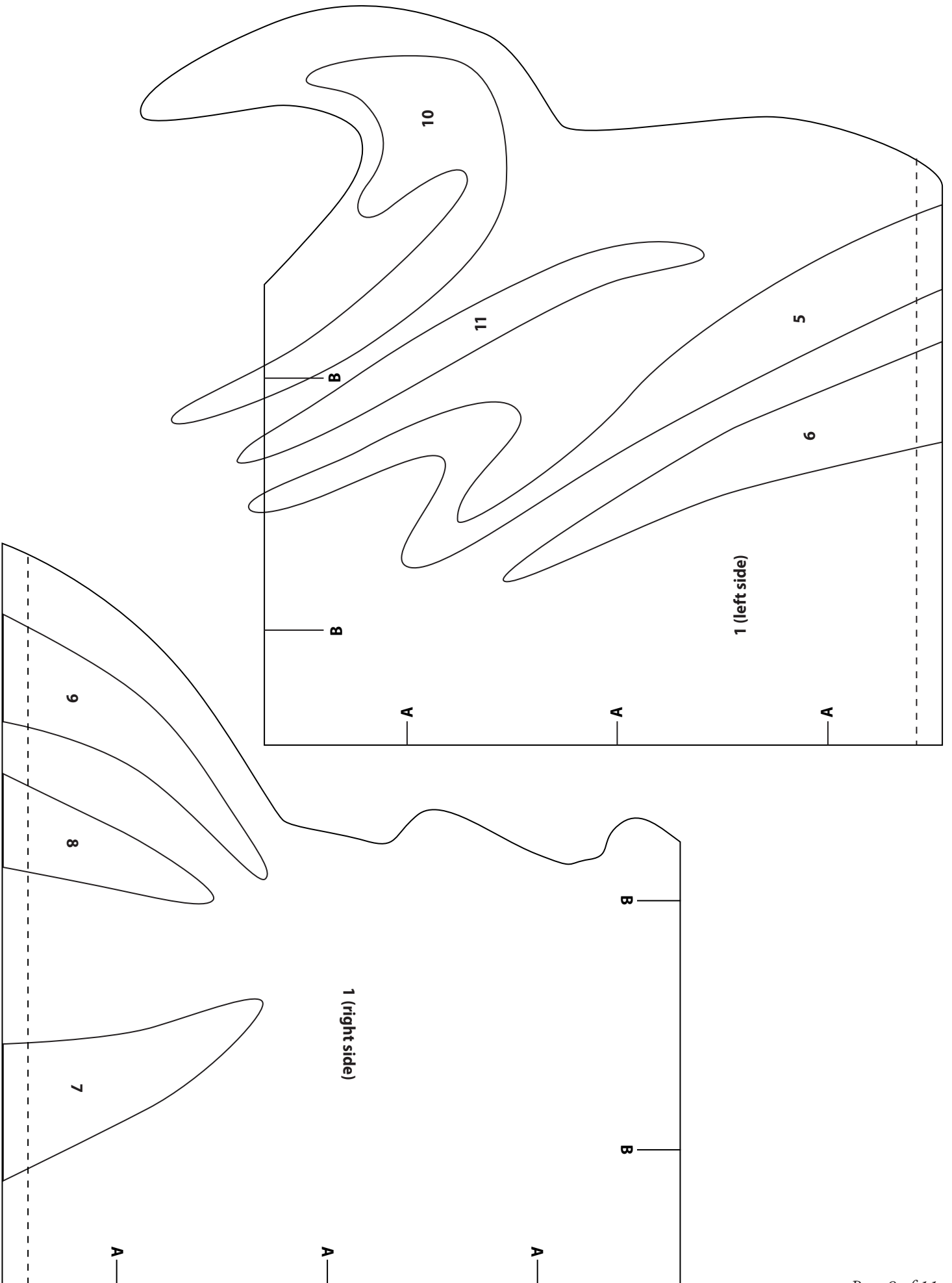


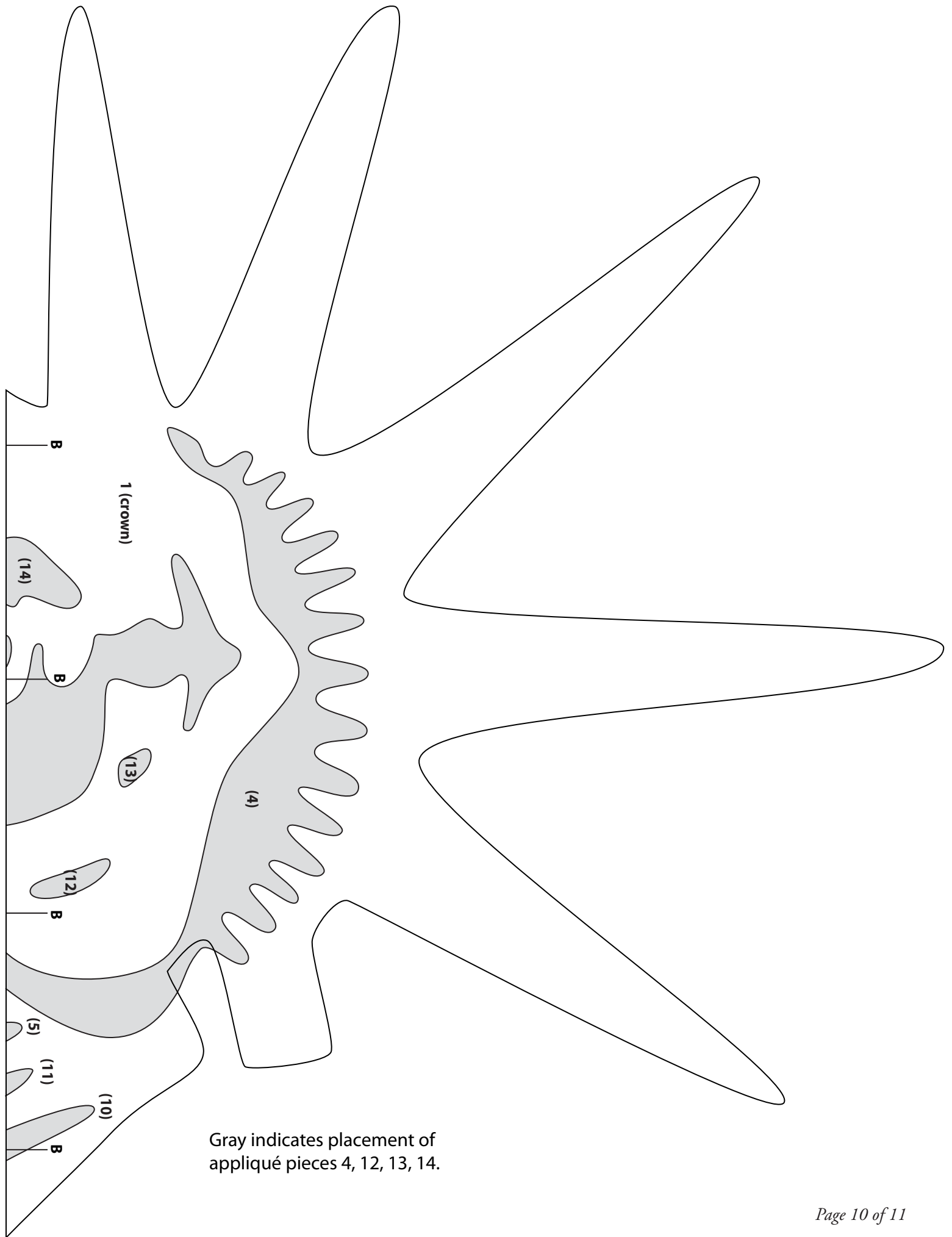






4 (head)





Gray indicates placement of appliqué pieces 4, 12, 13, 14.

1384 Broadway
 New York, NY 10018
 (800) 223-5678
 www.andoverfabrics.com

NYC by makower uk

The Henley Studio



TP-1068-1



TP-1070-1



TP-1071-1



TP-1073-1



TP-1069-1



TP-1072-1



TP-1075-1



TP-1074-1



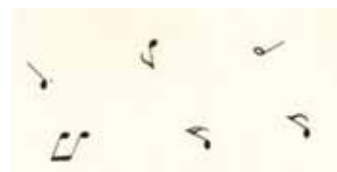
TP-1076-R

All fabrics are used in quilt pattern.

Fabrics shown are 40% of actual size.



1867-L



2508-Y



TP-1076-B