

Mayflower

ANDOVER FABRICS

a
100
years



Pilgrim's Progress Quilt designed by: **Janet Houts** • Quilt Size: **78" x 93"**
Skill Level: **Advanced** • andoverfabrics.com

andover

•
•
• makower.uk
•

Free Pattern Download Available

1384 Broadway New York, NY 10018
Tel. (800) 223-5678 • andoverfabrics.com

Pilgrim's Progress Quilt

Introducing Andover Fabrics new collection: **MAYFLOWER** by Andover Fabrics

Quilt designed by Janet Houts



Quilt finishes 78" x 93"

This queen-size quilt has an interesting setting with interlocking units that defy the typical pieced block patchwork. The piecing is easy, although care must be taken when arranging and sewing the various parts.

Cutting Directions

Note: Read assembly directions before cutting patches. All measurements are cut sizes and include 1/4" seam allowances. Borders are cut the exact lengths required plus 1/4" seam allowances. WOF designates the width of fabric from selvedge to selvedge (approximately 42" wide).

Cutting for 1 Big Lantern:

- Cut (1) rectangle 5" x 9 1/2"
- Cut (1) square 5 3/4" x 5 3/4", cut in half diagonally twice to make 4 quarter-square triangles (use 2 for each big lantern)
- Cut (2) squares 3 1/2"
- Cut (4) squares 2"

Cutting for 1 Small Lantern:

- Cut (1) rectangle 6 1/2" x 8"
- Cut (1) square 5 3/4" x 5 3/4", cut in half diagonally twice to make 4 quarter-square triangles (use 2 for each small lantern)
- Cut (2) rectangles 2" x 3 1/2"

Fabric A

- Cut (2) side borders 6 1/2" x 84 1/2", cut lengthwise
- Cut (2) top/bottom borders 6 1/2" x 78 1/2", cut lengthwise

Fabric B

- Cut (9) strips 2 1/2" x WOF for binding

Fabric C (patches make 12 small lanterns)

- Cut (12) rectangles 6 1/2" x 8"
- Cut (6) squares 5 3/4" x 5 3/4", cut in half diagonally twice to make 24 quarter-square triangles
- Cut (24) rectangles 2" x 3 1/2"

Fabric Requirements

		Yardage	Fabric
Fabric A	border	2 1/2 yards	9507-B
Fabric B	binding	3/4 yard	9510-B
Fabric C	units	1 yard	9507-L
Fabric D	border, set	1 1/2 yards	9511-B
8 Prints	units	1/2 yard each	
	9508-B	9508-BY	9508-E *9509-BL
	9509-E	9509-Y	9510-G 9510-Y
Backing		5 3/4 yards	*9509-BL

Fabric D

- Cut (8) strips 2" x WOF, pieced to make the following:
 - (2) side borders 2" x 78 1/2"
 - (2) t/b borders 2" x 66 1/2"
- Cut (4) squares 5 3/4" x 5 3/4", cut in half diagonally twice to make 16 quarter-square triangles
- Cut (2) squares 5 3/8" x 5 3/8", cut in half diagonally twice to make 4 half-square triangles
- Cut (4) rectangles 3 1/2" x 9 1/2"
- Cut (8) rectangles 3 1/2" x 8"
- Cut (12) rectangles 3 1/2" x 5"
- Cut (40) squares 2"

8 Prints From each:

- Cut patches needed for 6 lanterns (any combination of big and small)
- See cutting above for lanterns

Backing

- Cut (2) panels WOF x 101", pieced to fit quilt top with overlap on all sides

Making the Quilt

1. Because this pattern is not made with typical blocks, careful attention must be taken when arranging the fabrics into units. Note that in some cases, 6 big lanterns are made with one fabric, and in other cases, 6 small lanterns are made with one fabric. Other prints have both big and small lanterns. Follow the Quilt Diagram to decide which prints to use in which size of lantern. Feel free to change the placement of the fabrics. Cut the patches for each lantern as shown in Diagram 1. Plan 30 of each size lantern.
2. Using a design wall or large flat surface, lay out the lanterns in *horizontal* rows, referring to the lantern diagrams in Step 1, the photograph and the Quilt Diagram. Note that there are 5 small lanterns in odd-numbered horizontal rows and 6 big lanterns in even-numbered rows. The rows fit together like a jigsaw puzzle. Place the Fabric D patches around the outer edges of the quilt, following Diagram 2 and the Quilt Diagram for placement.
3. The quilt is constructed in 13 *vertical* rows, each row made up of units that contain fabrics from different lanterns. Refer to Diagram 2. Beginning with vertical Row 1, make the 5 Unit 1s needed for the row, noting that each Unit 1 uses a different print with Fabric D. Replace each Unit 1 on the design wall after it is made. Once the parts are in the correct order, join Unit 1s and Fabric D rectangles to make Row 1.
4. Make the Unit 2s and Unit 3s needed for Row 2, again making sure that each unit has the appropriate fabrics needed for adjacent lanterns. As each unit is pieced, replace it on the design wall to be certain that the fabrics are in the correct position. Join patches and units to make Row 2.

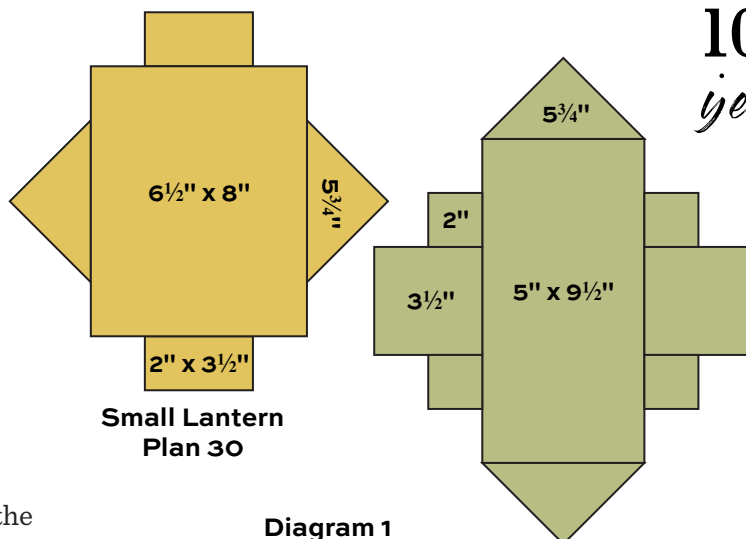
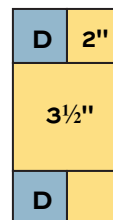


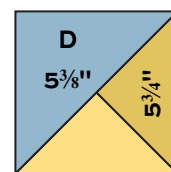
Diagram 1

Small Lantern
Plan 30

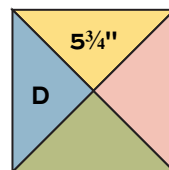
Big Lantern
Plan 30



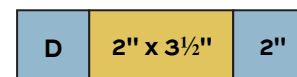
Unit 1 – Make 10



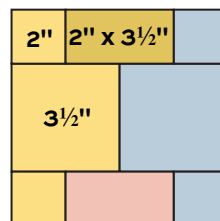
Unit 2 – Make 4



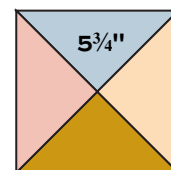
Unit 3 – Make 16



Unit 4 – Make 10



Unit 5 – Make 25



Unit 6 – Make 16

Pilgrim's Progress Quilt



- Repeat the steps to complete the vertical rows in order. Make 13 rows. Look at the quilt through the wrong end of binoculars or through a camera to be certain that no unit is out of place or has been turned incorrectly. Once everything looks correct, join the rows together.
- Sew long Fabric D borders to the sides of the quilt, and shorter borders to the top and bottom. Repeat with Fabric A borders.

Finishing the Quilt

- Layer the quilt with batting and backing and baste. Quilt in the ditch around borders and patches. Quilt the large rectangles as desired, and quilt around the printed motifs in the outer border. Bind to finish the quilt.

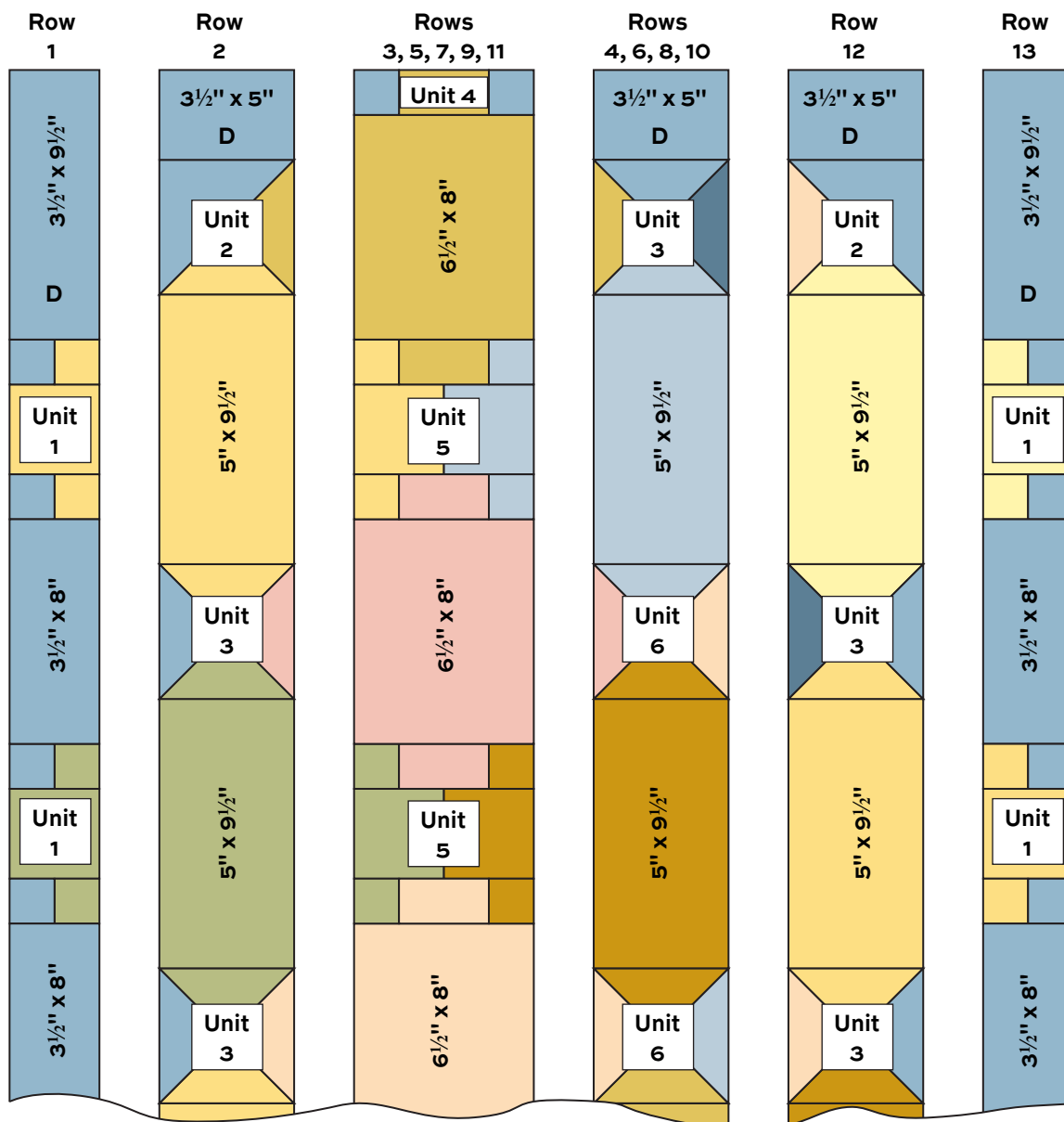
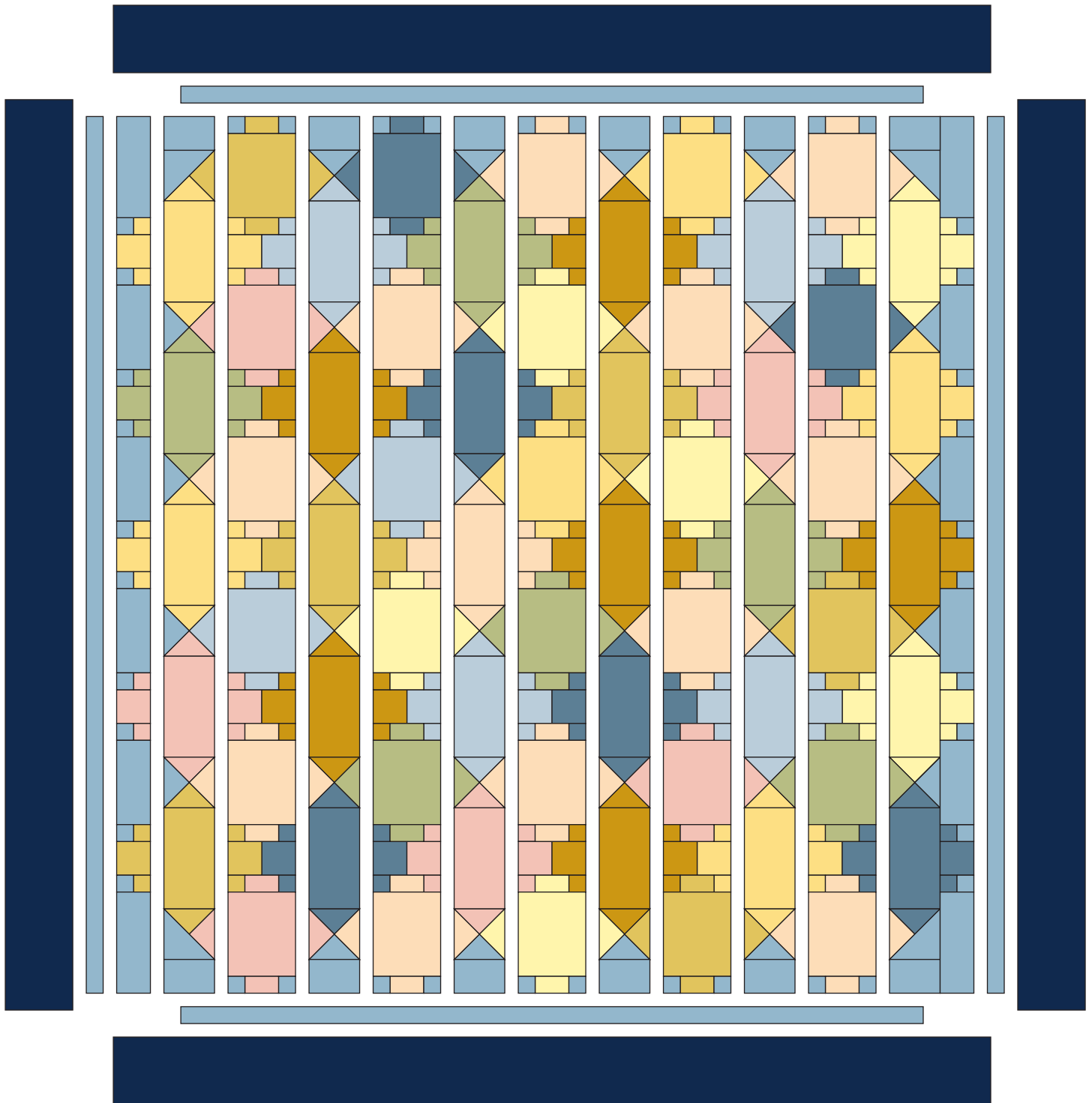


Diagram 2



Quilt Diagram

Mayflower

ANDOVER FABRICS

a
100
years



9507-B*



9510-B*



9510-E



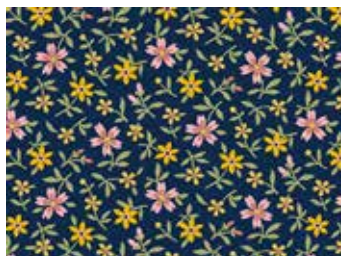
9507-L*



9510-G*



9510-Y*



9509-B



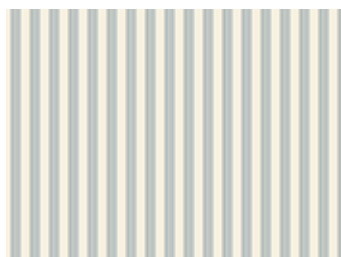
9509-BL*



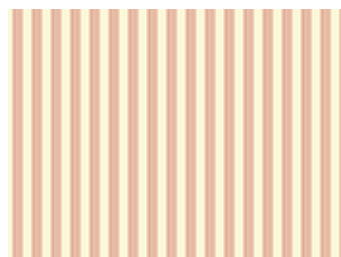
9509-E*



9509-Y*



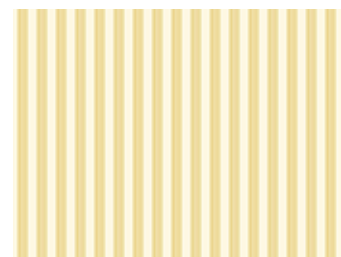
9512-B



9512-E



9512-G



9512-Y



9508-B*



9508-BY*



9508-E*



9511-B*



9511-E



9511-Y

*Indicates fabrics used in quilt pattern. Fabrics shown are 50% of actual size.

andover : makower uk

Free Pattern Download Available

1384 Broadway New York, NY 10018
Tel. (800) 223-5678 • andoverfabrics.com