

Haberdashery

FABRICS BY JO MORTON

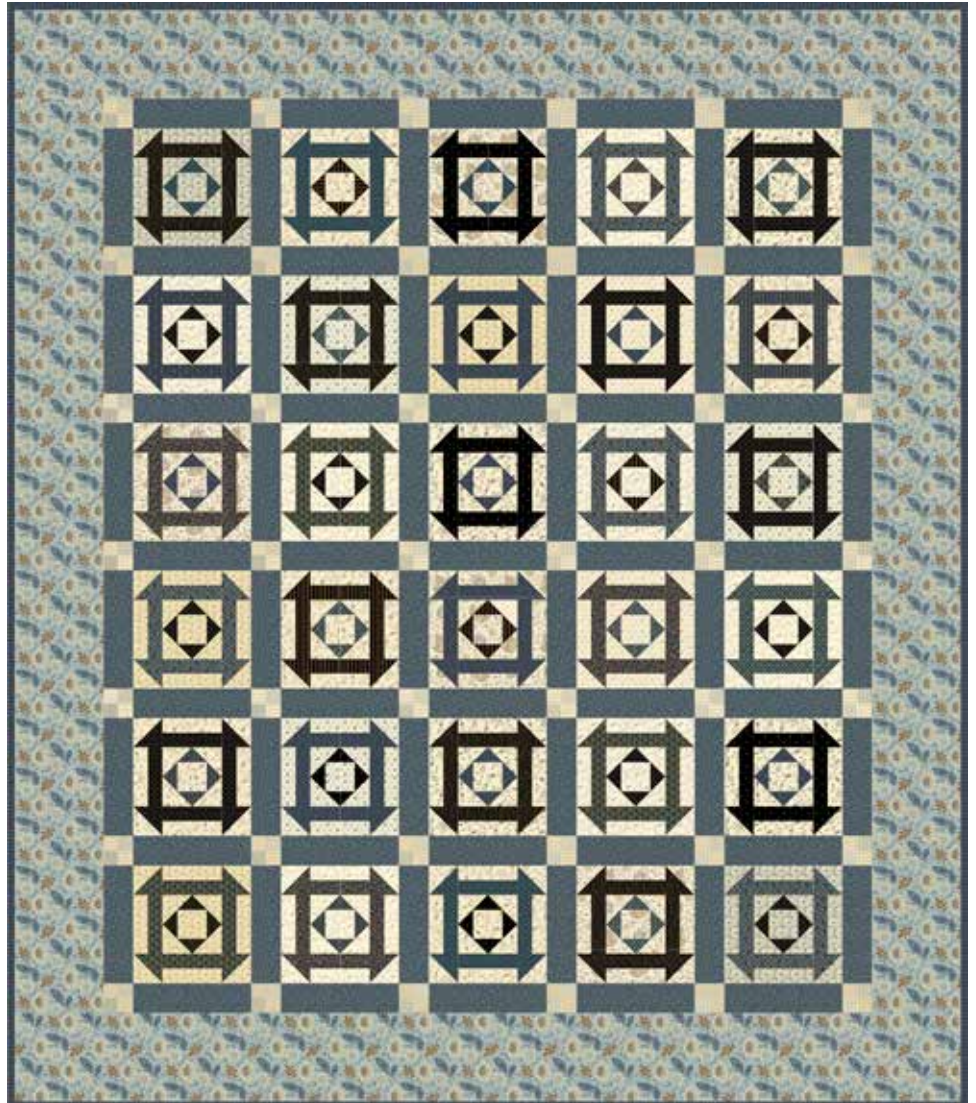


Quilt designed and made by:
Candy Hargrove

Machine quilted by:
Maggi Honeyman

Quilt Size: **64" x 74"**

andoverfabrics.com



About Haberdashery

I found some beautiful mill engravings that are the basis for this group, and also for the Melodies group – love the soft beige and soft gray tones. I know you will love sewing with these and adding them to your fabric collection.



andover

•
•
•
•
•
makower uk
The Henley Studio

Free Pattern Download Available

1384 Broadway New York, NY 10018
Tel. (800) 223-5678 • andoverfabrics.com

Haberdashery Quilt



Introducing Andover Fabrics new collection: **HABERDASHERY** by Jo Morton

Quilt designed and made by Candy Hargrove, machine quilted by Maggi Honeyman

Quilt finishes 64" x 74"

15 Blue Blocks: 8" x 8"

15 Black Blocks: 8" x 8"

A lovely, large-scale floral border surrounds the easy-to-piece Churn Dash blocks in this throw-size quilt. Light and dark values of reproduction prints make the blocks a standout, and striped setting squares add to the overall charm.

Cutting Directions

Note: Read assembly directions before cutting patches. All measurements are cut sizes and include 1/4" seam allowances. Borders are cut the exact lengths required plus 1/4" seam allowances. WOF designates the width of fabric from selvedge to selvedge (approximately 42" wide). The blue and black fat quarters are generous to allow you to cut more blocks from your favorite prints. Pay attention to the direction of the striped print as you cut rectangles for the Churn Dash patches.

Cutting for ONE block

From cream: Cut (2) squares 2 7/8" for HST* (Read Step 1)
Cut (2) squares 2 7/8", cut in half diagonally once to make 4 half-square triangles
Cut (4) rectangles 1 1/2" x 4 1/2"
Cut (1) square 2 1/2" for block center

From blue or black: Cut (2) squares 2 7/8" for HST* (Read Step 1)
Cut (4) rectangles 1 1/2" x 4 1/2"
Cut (1) square 3 1/4", cut in half diagonally twice to make 4 quarter-square triangles

Fabric A Cut (84) squares 1 1/2"

Fabric B Cut (84) squares 1 1/2"

Fabric C Cut (2) side borders 6 1/2" x 64 1/2", cut lengthwise
Cut (2) top/bottom borders 6 1/2" x 62 1/2", cut lengthwise

Fabric D Cut (71) sashes 2 1/2" x 8 1/2"

Fabric E Cut (8) strips 2 1/2" x WOF for binding

9 Creams Cut patches for 3 or 4 blocks from each (30 blocks total)

7 Blues Cut patches for 2 or 3 blocks from each (15 blocks total)

5 Blacks Cut patches for 3 blocks from each (15 blocks total)

Backing Cut (2) panels 36" x 82", pieced to fit quilt

Fabric Requirements

		Yardage	Fabric
Fabric A	setting squares	fat 1/4 yard	7644-K
Fabric B	setting squares	fat 1/4 yard	7644-N
Fabric C	border	2 yards	7458-B
Fabric D	sashes	1 3/8 yards	7459-B
Fabric E	binding	5/8 yard	7464-B
9 Creams	blocks	fat 1/4 yard ea.	
	7639-NK	7640-K	7640-N
	7461-N	*7642-K	7642-N
	7643-N		7641-K
			7643-K
7 Blues	blocks	fat 1/4 yard ea.	
	7460-B	7461-B	7462-B
	7465-B	7466-B	7467-B
5 Blacks	blocks	fat 1/4 yard ea.	
	7459-YK	7463-YK	7465-YK
	7467-YK		7466-YK
*Backing		4 3/4 yards	7642-K

Making the Quilt

- *The blocks use half-square triangles (HST) that finish 2" square. Use your favorite method to make HST, or follow these directions. Draw a diagonal line on the wrong side of a cream 2 7/8" square (Diagram 1). Place the marked square on a blue or black square, right sides together. Sew 1/4" seam on each side of the marked line; cut apart on the marked line. Press open to make pieced HST. Make 4 HST alike for each block. Set aside.

*Hint: To make HST that are exact, begin with 3" squares of fabric instead of 2 7/8", and then trim the HST to 2 1/2" square.

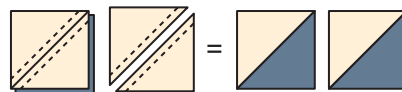
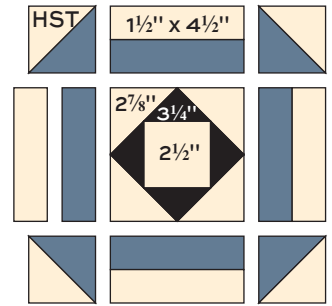


Diagram 1 - HST

Haberdashery Quilt

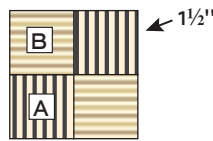
- Note that the blue blocks use a blue print in the outer patches and black print triangles around the center cream square. The black blocks reverse the color placement.

Referring to the blue block diagram, sew 4 black quarter-square triangles to the sides of the center $2\frac{1}{2}$ " square. Sew 4 cream $2\frac{7}{8}$ " half-square triangles around the center to make a pieced square that should measure $4\frac{1}{2}$ " from side to side. If it does not, adjust your piecing and pressing methods. Set aside.

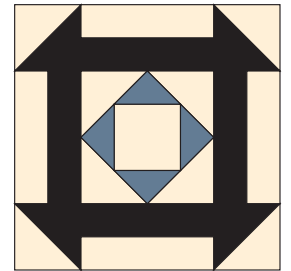


Blue Block – Make 15

- Join a cream and a blue rectangle together to make a side unit. Make 4 alike.
- Referring to the block diagram, join the HST, side units, and the center unit to make a blue block. Make 15. Repeat the process to make 15 black blocks, reversing the blue and black patch placement.
- Referring to the setting square diagram, sew 2 Fabric A and 2 Fabric B squares to make a four-patch square, turning the stripes as shown. Make 42.



Setting Square – Make 42



Black Block – Make 15

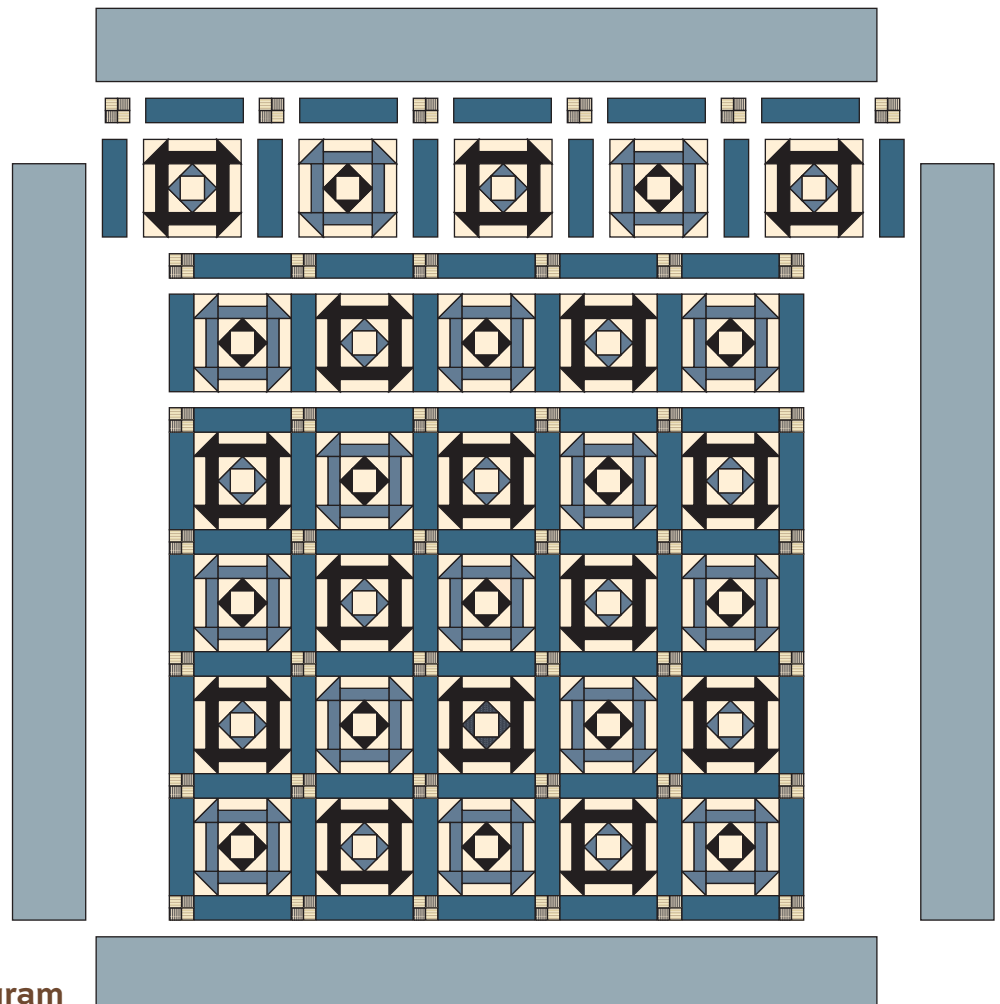
- Referring to the quilt diagram, join 3 blue blocks, 2 black blocks, and 6 sashes to make a horizontal row. Make 3 rows like this. Join 3 black blocks, 2 blue blocks, and 6 sashes to make a row. Make 3 rows like this.

- Sew 5 sashes between 6 setting squares to make a sash row, orienting the pieced squares as shown. Make 7 sash rows. Join the rows in the order shown.

- Sew shorter borders to the sides. Sew longer borders to top and bottom.

Finishing the Quilt

- Layer the quilt with batting and backing and baste. Quilt in the ditch around borders and block patches. Quilt around the printed motifs in the outer border. Bind to finish the quilt.



Quilt Diagram

Haberdashery

FABRICS BY JO MORTON



7639-NK



7640-K



7640-N



7641-K



7641-N



7642-K



7642-N



7643-K



7643-N



7644-K



7644-N

Blend with fabrics from **Woodlands** by Jo Morton



7458-B



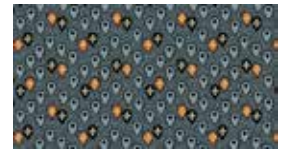
7459-B



7459-YK



7460-B



7461-B



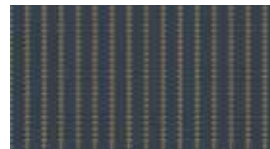
7463-B



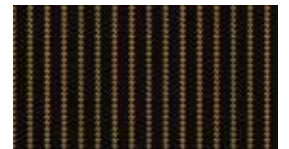
7463-YK



7464-B



7465-B



7465-YK



7462-B



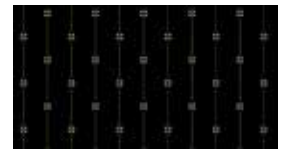
7466-B



7466-YK



7467-B



7467-YK

All fabrics are used in quilt pattern. Fabrics shown are 30% of actual size.

andover

•
•
•
•
•
makower uk
The Henley Studio

Free Pattern Download Available

1384 Broadway New York, NY 10018
Tel. (800) 223-5678 • andoverfabrics.com