

# Fanfare



Quilt designed by Jean Ann Wright  
Finished size: 54" x 78"

*Andover  
Fabrics™*  
makower uk®

*Fabrics by*  
**Kathy Hall**

1384 Broadway · New York, NY 10018  
(800) 223-5678 · [www.andoverfabrics.com](http://www.andoverfabrics.com)

# Fanfare Quilt

Introducing Andover Fabrics new collection: Fanfare by Kathy Hall

Quilt designed by Jean Ann Wright

Tradition with a splash of bright color is the focus of this wall quilt/throw. Faux Crazy Quilt patchwork adds a playful touch to the outer border, and a novelty-stripped border adds more interest. The fans are pieced together and appliquéd by hand, or they can be fused and finished by machine.

Quilt finishes 54" x 78"

## Fabric Requirements

	Yardage	Black	Blue	Purple
Fabric A outer border	2 <sup>3</sup> / <sub>8</sub> yards	4108-MK	4108-MB	4108-MP
Fabric B sash strips	1/2 yard	4109-MK	4109-MB	4109-MP
Fabric C fans wedges, inner border	3/4 yard	4110-MK	4110-MB	4110-MP
Fabric D* fan wedges	1/8 yard	4111-MK	4111-MB	4111-MP
Fabric E fan wedges	1/8 yard	1867-O1	1867-Y4	1867-N
Fabric F fan wedges, middle border	1/2 yard	1867-MK	1867-B7	1867-V3
Fabric G fan wedges, binding	3/4 yard	1867-R9	1867-B15	1867-R5
Fabric H fan blocks background	3/4 yard	1867-Y17	1867-L2	1867-ML
Fabric I fan centers	1/4 yard	1867-Y4	1867-Y17	1867-Y17
* Additional fabric required for backing				
Fabric D backing	4 <sup>7</sup> / <sub>8</sub> yards	4111-MK	4111-MB	4111-MP

## Cutting Directions

**Note:** Sashes are cut exact lengths plus 1/4" seam allowances. Mitered borders include 2" extra length plus seam allowances.

- Fabric A** Cut (2) borders 6 1/2" x 80 1/2", cut lengthwise  
Cut (2) borders 6 1/2" x 56 1/2", cut lengthwise
- Fabric B** Cut (3) sash strips 4 1/2" x 24 1/2", cut crosswise
- Fabric C** Cut (2) borders 8 1/2" x 66 1/2", cut lengthwise  
Cut (2) borders 8 1/2" x 42 1/2", cut lengthwise  
Cut (6) fan wedges
- Fabric D** Cut (6) fan wedges
- Fabric E** Cut (6) fan wedges
- Fabric F** Cut (2) borders 1 1/2" x 68 1/2" crosswise and piece  
Cut (2) borders 1 1/2" x 44 1/2" crosswise and piece  
Cut (6) fan wedges
- Fabric G** Cut (7) 2 1/2" x width of fabric strips  
Cut (6) fan wedges
- Fabric H** Cut (3) panels 24 1/2" x 12 1/2", cut lengthwise
- Fabric I** Cut (3) half circle fan centers

\*Additional fabric required for backing

\*4111-MK 4<sup>7</sup>/<sub>8</sub> yards Dense Black Posies (backing)

Cut and piece to fit quilt top with 4" overlap on all sides.

## Making & Assembling the Quilt

Read through the instructions and determine which method of fan construction you prefer.

- 1. Machine Piecing & Appliqué:** Make a see-through plastic template for the fan wedge that includes all seam allowances. Mark the dots on the template, and use an ice pick or awl to punch a small hole at the dots. Cut out the fan wedges, 6 of each appropriate fabric. Fussy-cut the 6 fabric C patches. On the back of each fabric patch, mark a dot through the template holes. Lay out the wedges as shown on the quilt. Sew 10 fabric fan wedges side by side, stopping stitching at the dot (Diagram 1). Press the seam allowances open between patches (Diagram 2).
- 2.** Make a pressing template for the wedge from lightweight cardboard with a seam allowance only on the bottom curved edge. Position the pressing cardboard on the back of a fan wedge, aligning the bottom curved edge with the bottom of the fabric patch (Diagram 2). Trim cardboard from each side evenly until it fits comfortably until it fits between the sewing lines. Press the seam allowance of the pointed end of a wedge over the edge of the cardboard. Pin the fabric's folded edge to the ironing surface as you go to keep the points neatly in place. Press the points of all 10 wedges. Do not press under the seam allowances on the outer long sides of the first and last patches.

# Fanfare Quilt

3. Fold the fabric H background panel in half vertically to find the center. Center the fan on the panel with straight edges even along the bottom. Pin or thread baste in place. Cut 3 half-circle fan centers and press under  $\frac{1}{4}$ " seam allowance along the curved edge of each. Before stitching the fan, be certain that the pressed half circle covers the bottom raw edge of the fan.
4. Hand blind stitch the folded outer edge of the fans to the background panels. Position a center over the bottom of each fan and blind stitch in place. Alternately, use a machine straight stitch or decorative stitch along the folded edges of the appliqué.
5. **Fusible Appliqué:** Make a template for the fan wedge with seam allowances on the bottom curved edge and the long sides. Do not include allowances on the pointed end. Mark around the template on the paper side of fusible webbing for each patch needed. Cut each paper patch out, leaving a little extra around the drawn lines. Following manufacturer's directions, press the paper patch to the wrong side of the fabric and cut out along the drawn lines. Repeat for all 30 patches. Likewise, draw 3 half-circle centers without seam allowances on the webbing. Fuse to the orange fabric and cut out.
6. Remove paper backing and position 10 fabric wedges in the center of each background panel, overlapping them along the long sides. Be sure that the long sides of the first and last patch are even with the bottom of the panel so they will get caught in the seam later. Position the half-circle center to be sure that placement is correct. Readjust as needed. When you are satisfied with placement, fuse all patches to the background. Finish raw edges with a machine decorative stitch with contrasting thread, or use a machine hemstitch and invisible thread.
7. Refer to the Quilt Diagram for the assembly. Sew a sash to the bottom of each fan panel. Sew 3 panels together to make the quilt center.
8. Matching centers, sew the long fabric F middle borders between the fabric C inside borders and fabric A outside borders to make border units. Repeat for short borders. Sew the appropriate length border unit to each side of the quilt, stopping stitching  $\frac{1}{4}$ " from edge of quilt. Miter the corners, and trim the excess from the seam allowances.

## Finishing the Quilt

9. Layer quilt with batting and backing. Quilt around the fan patches. Quilt an overall grid in the background around the fans and in the fan center patches. Quilt in the ditch around borders. Quilt around the motifs in the border prints. Bind to finish the quilt.

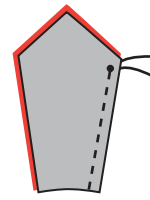


Diagram 1

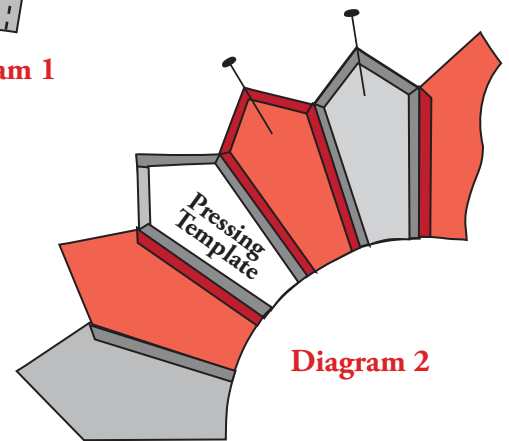
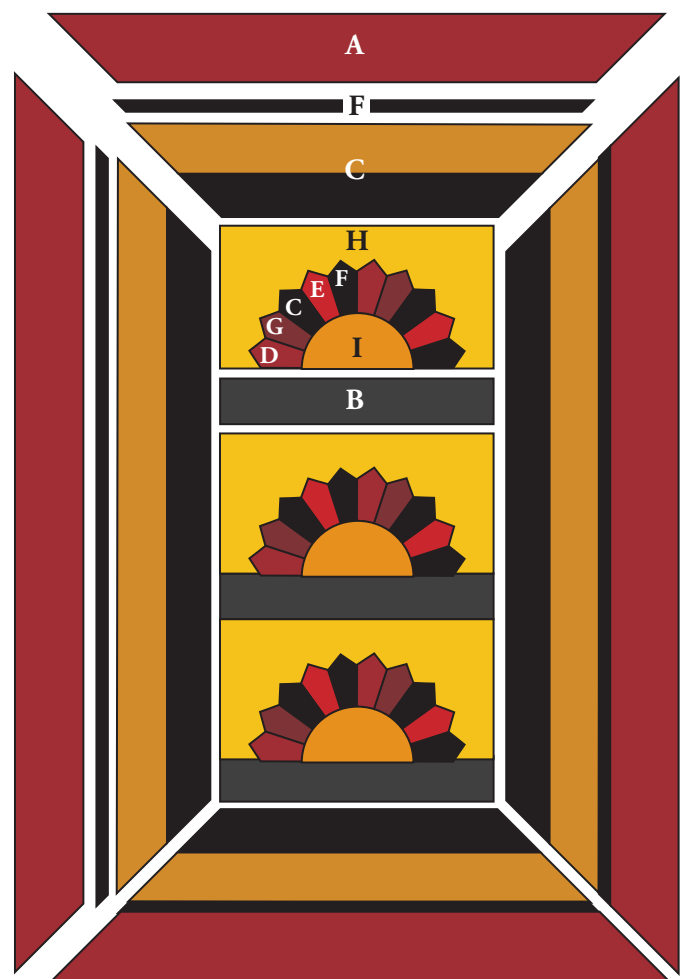
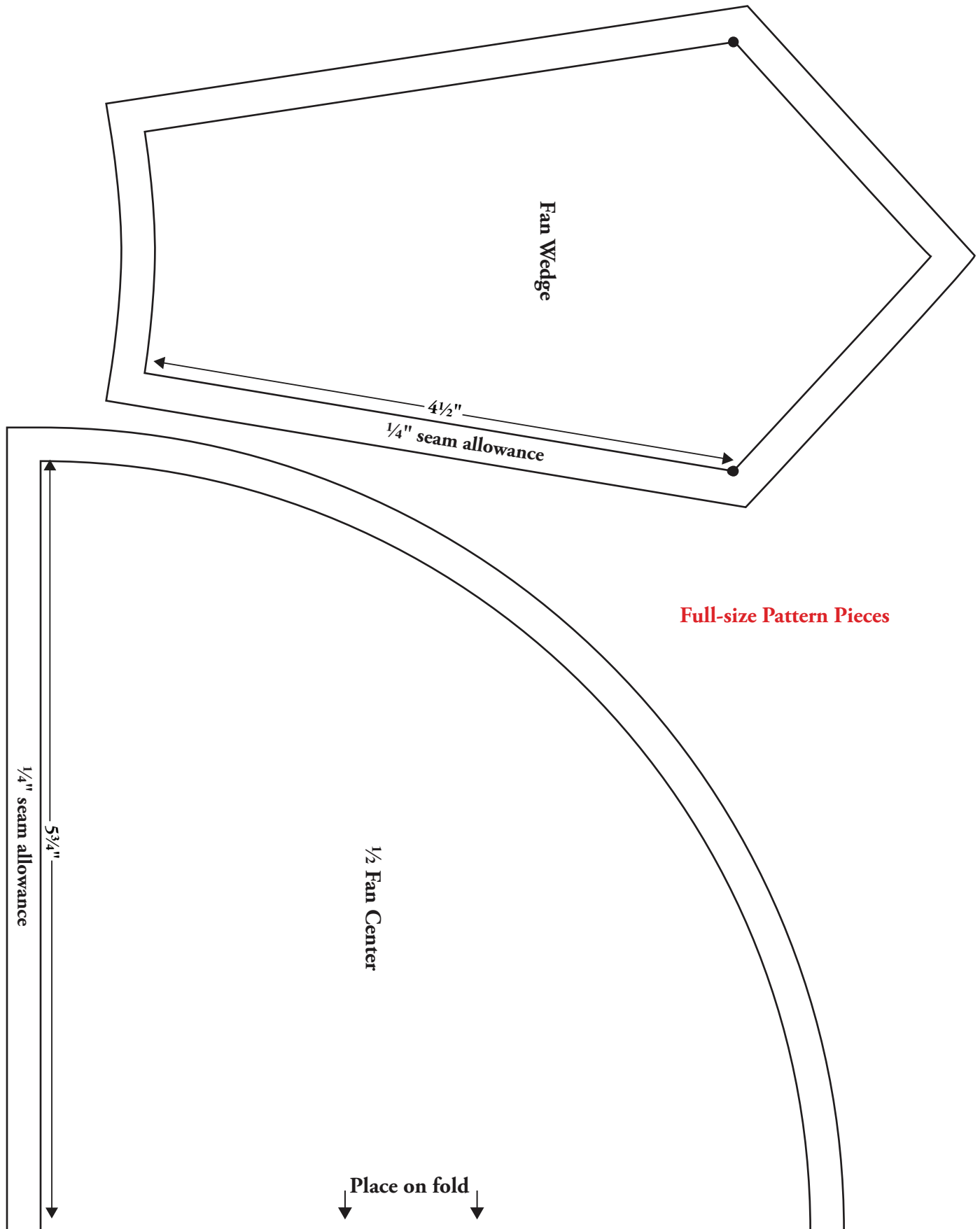


Diagram 2



Quilt Diagram



1384 Broadway  
 New York, NY 10018  
 (800) 223-5678  
 www.andoverfabrics.com

# Fanfare

by Kathy Hall



4108-MK\*



4110-MK\*



4109-MK\*



4111-MK\*



1867-Y17\*



1867-O1\*



1867-R9\*



1867-MK\*



1867-K2\*



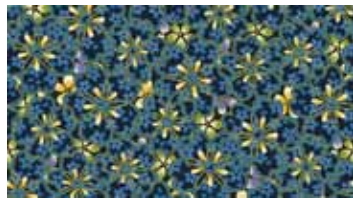
4108-MB



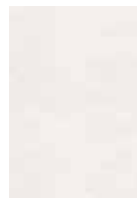
4110-MB



4109-MB



4111-MB



1867-L2



1867-Y17



1867-Y4



1867-B15



1867-B7



4108-MP



4110-MP



4109-MP



4111-MP



1867-ML



1867-Y17



1867-V3



1867-R5



1867-N

\*Indicates fabric used in quilt pattern. Fabrics shown are 20% of actual size.